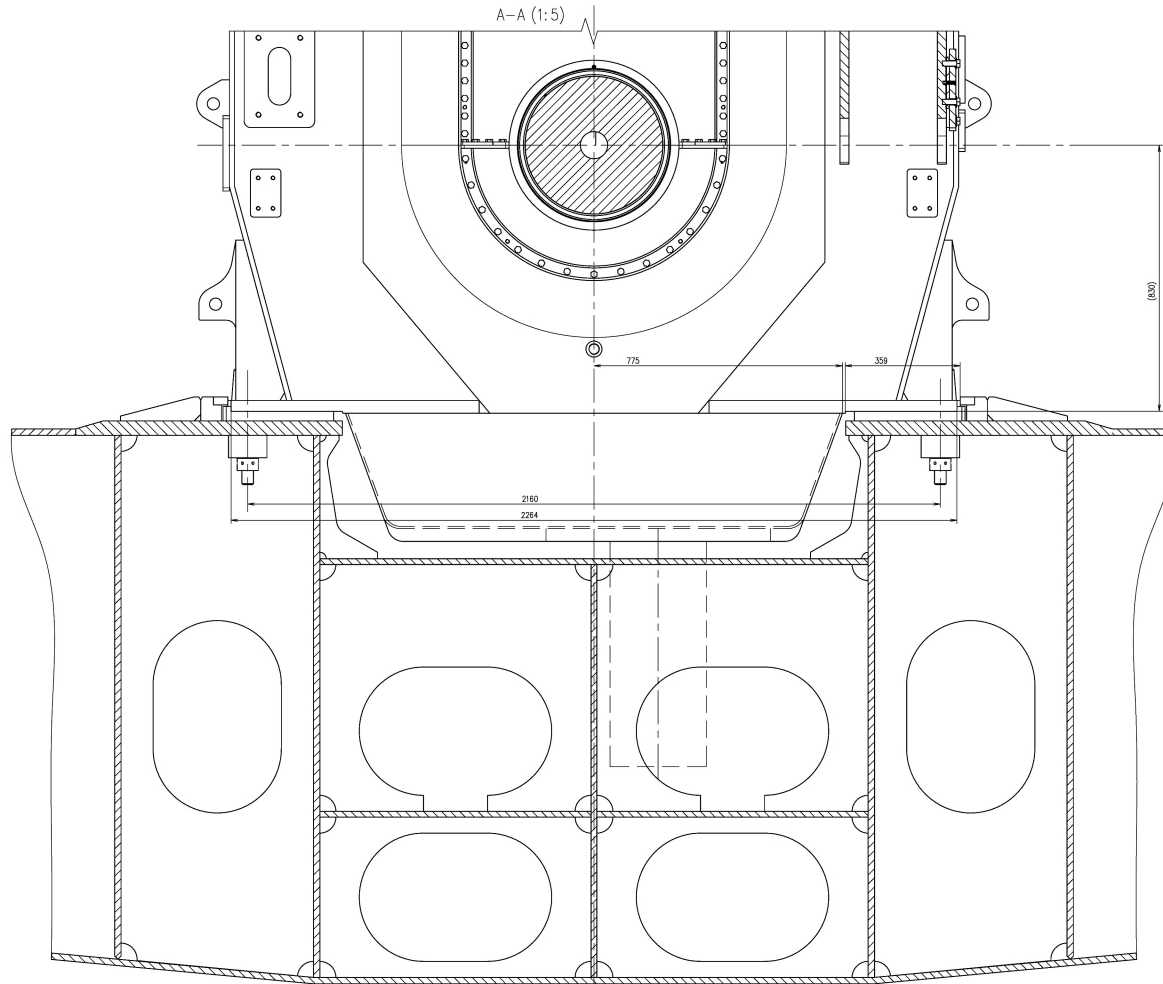


01.02



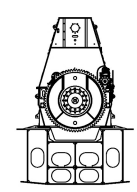
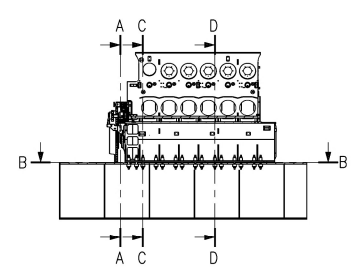
SIZE		UNIT		SCALE		PROJ.		1st ANGLE PROJECTION	
UNDER	OVER	UNDER	OVER	UNDER	OVER	UNDER	OVER	UNDER	OVER
0.0	0.0	0.3	0.3	25	25	1:1	1:1		
REVISIONS									
NO.	DESCRIPTION	(DATE)	ZONE	AP.	PROB.	CHKD.	ED.	PREVIOUS DRAWING	
△	本図に変更は無し。	C方式変更管理書 No. UC11257						0-DAAD013360/C(1/3)	

PLAN RECORD
ISO METRIC SCREW THREADS

U1-1E268-01	6 Cyl	Execution with side stoppers welded type サイドストップ溶接タイプ
U1-1E268-02	6 Cyl	Execution with side stoppers flame-cut type サイドストップフレムカットタイプ

前図と引換のこと 基本図

No	Qty	Part No.	Description	Material	Quantity
1	1	U1-1E216-00	FITTING INSTRUCTIONS 組立要領書		
2	14	U1-1E213-00	ENGINE SIDE STOPPER サイドストップ組立	造船所支給 Supplied by shipyard	60.0
-	2	U1-1E208-00	ENGINE SIDE STOPPER サイドストップ組立	造船所支給 Supplied by shipyard	37.9
24	24	U1-1E207-01	PLUG プラグ	造船所支給 Supplied by shipyard	Rubber750
6	6	U1-1E206-01	JOINT DISC ジョイントディスク	造船所支給 Supplied by shipyard	Rubber750
1	1	U1-1E205-01	SEALING PIECE シーリングピース	造船所支給 Supplied by shipyard	0.001
30	30	U1-1E204-01	SPHERICAL ROUND NUT 丸ナット	造船所支給 Supplied by shipyard	34C-Mo4 SCM 435Q
24	24	U1-1E203-01	BUSH ブッシュ	造船所支給 Supplied by shipyard	34C-Mo4 SCM 435Q
24	24	U1-1E202-01	CONICAL SOCKET コーナルソケット	造船所支給 Supplied by shipyard	34C-Mo4 SCM 435Q
6	6	U1-1E201-01	CONICAL SOCKET コーナルソケット	造船所支給 Supplied by shipyard	34C-Mo4 SCM 435Q
30	30	U1-1E200-01	ELASTIC BOLT 台板差付ボルト	造船所支給 Supplied by shipyard	34C-Mo4 SCM 435Q
6	6	U1-1E199-01	BUSH ブッシュ	造船所支給 Supplied by shipyard	34C-Mo4 SCM 435Q
30	30	U8-7E052-04	ROUND NUT 丸ナット	造船所支給 Supplied by shipyard	42C-Mo4 SCM 440Q
-	1	02	ENGINE SEATING/FOUNDATION(1/3) 台板差付要領書(1/3)		544
1	-	01	ENGINE SEATING/FOUNDATION(1/3) 台板差付要領書(1/3)		588



MATERIAL SHALL COMPLY WITH JIS STANDARD
材料指示はJISに基づく。

See drawing 2/3,3/3

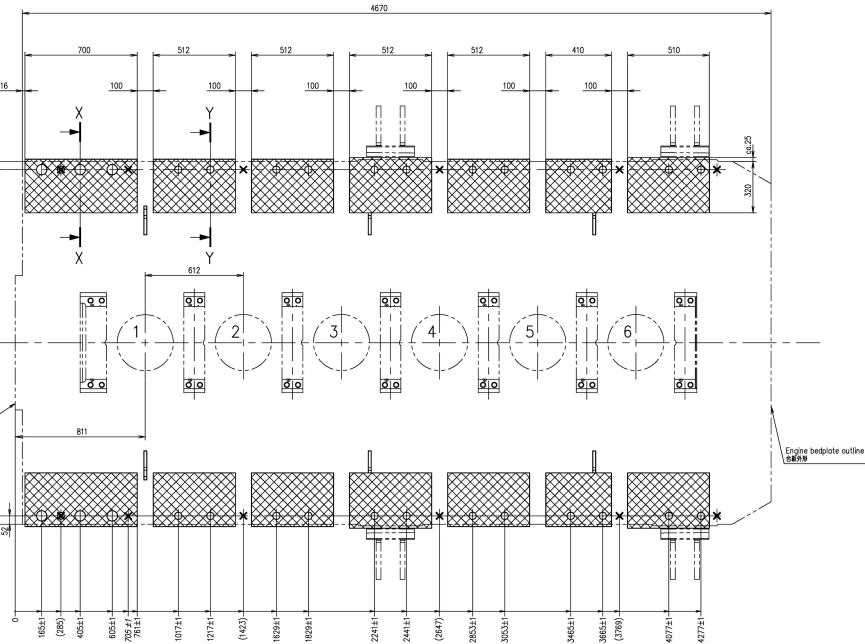
(*) This drawing is reduced on a scale of 60% to the written scale.
(*1) 本図は表記尺の60%で表記している。

THIS DRAWING IS THE PROPERTY OF JAPAN ENGINE CORPORATION, AND SHALL NOT BE REPRODUCED, NOT BE USED TO FURNISH ANY INFORMATION FOR MAKING DRAWINGS OR APPARATUS EXCEPT FOR THE CASE WHERE JAPAN ENGINE CORPORATION AGREES WITH WRITTEN MATERIALS.

COMMON VARIATION OF TOLERANCE (M.M)	RATINGS OF NORMAL DIMENSION	OVER	OVER	OVER	OVER	OVER	OVER	OVER	OVER
		0.1	0.2	0.3	0.5	0.8	1.2	2.0	2.0

APPROVED	発行部	6UEC3LSE
CHECKED	検査	ENGINE SEATING/FOUNDATION(1/3)
DRAWN	今中	台板差付要領書(1/3)
BATCH NO.	2013.10.16	52-11
SCALE	1/5,1/50(*1)	U1-1E268

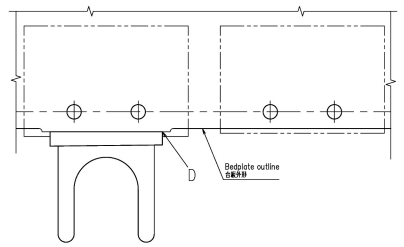
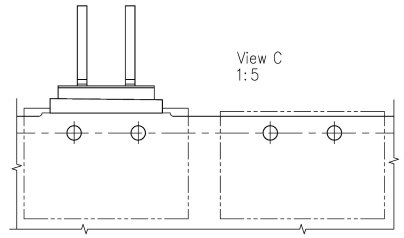
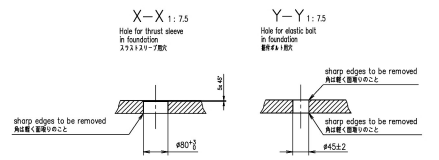
B-B CHOCKING AND DRILLING PLAN FOR FOUNDATION BOLTS
 チェックアップ、ボルト掘削計画図



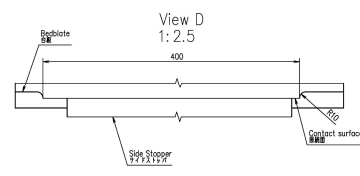
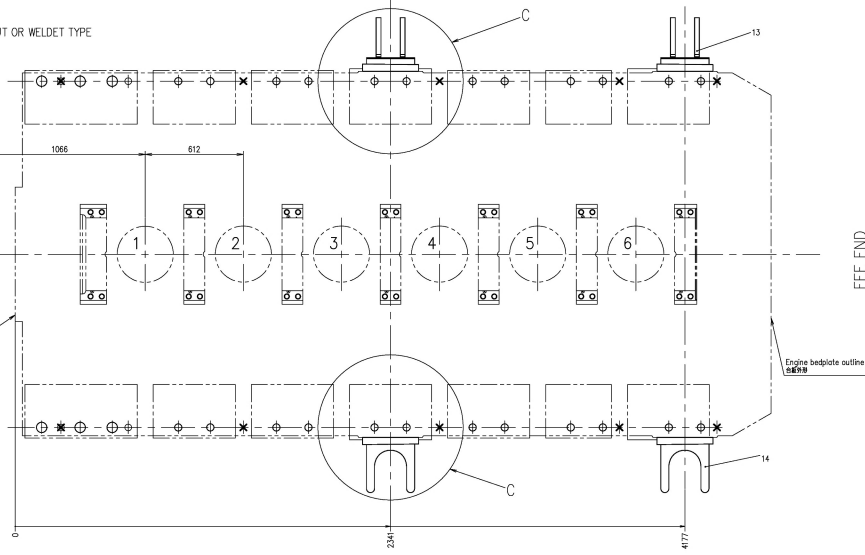
SURFACE FINISH				1st ANGLE PROJECTION				PLAN RECORD	
UNDER	UNDER	UNDER	UNDER	AP.	CHECK.	ISO METRIC SCREW THREADS		PREVIOUS DRAWING	
0.6	0.3	0.25	0.1	PROJ.	ED	No. UC11257		0-DAAD013360/C(2/3)	
REVISIONS		ZONE		AP.		CHECK.			
NO.	DESCRIPTION	(DATE)		PROJ.		ED			
1	本図に変更無し。	C方式変更管理書		今中		今中			
		2017-12-26		No. UC11257					

- 備考:
- *1) エポキシ樹脂チェックの最大許容平均面圧については所定の船級規則に従うよう造船所にて決定のこと。
 - *2) X印はジャッキボルト位置を示す
 - *3) レジンチェックの標準厚さは25~60mmとすること。最終的な厚さは造船所にて決定のこと。

- Remarks:
- *1) The max. permissible mean surface pressure of the epoxy resin chocks is to be determined by the shipyard in accordance with the relevant classification society/rules.
 - *2) with X marked positions represent jacking screws.
 - *3) Referring to a standardized chock thickness of 25 up to 60mm. Final chock thickness to be determined by shipyard.



B-B ENGINE SIDE STOPPER ARRANGEMENT WITH FLAME-CUT OR WELDED TYPE
 機関サイドストップ配置図(フレイムカット及び溶接タイプ)



DATE		開発部		APPROVED		6UEC33LSE	
ORDER NO.	DATE	APPROVED	DATE	APPROVED	DATE	APPROVED	ENGINE SEATING/FOUNDATION (2/3)
TEAM NO.	DATE	DATE	DATE	DATE	DATE	DATE	台板付要領図 (2/3)
CHECKED	CHECKED	CHECKED	CHECKED	CHECKED	CHECKED	CHECKED	52-11
DRAWN	DRAWN	DRAWN	DRAWN	DRAWN	DRAWN	DRAWN	U1-1E268
OWNER	DATE	DATE	DATE	DATE	DATE	DATE	REVISION
	SCALE	SCALE	SCALE	SCALE	SCALE	SCALE	A
	SCALE	SCALE	SCALE	SCALE	SCALE	SCALE	52-11
	SCALE	SCALE	SCALE	SCALE	SCALE	SCALE	52-11

See drawing 1/3,3/3
 (*1) This drawing is reduced on a scale of 60% to the written scale.
 (*1) 本図は表記尺面の60%で表記している。

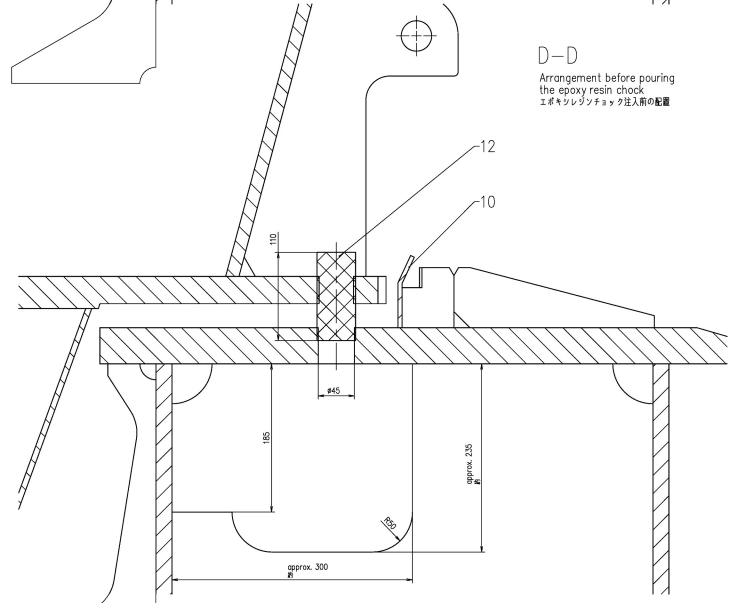
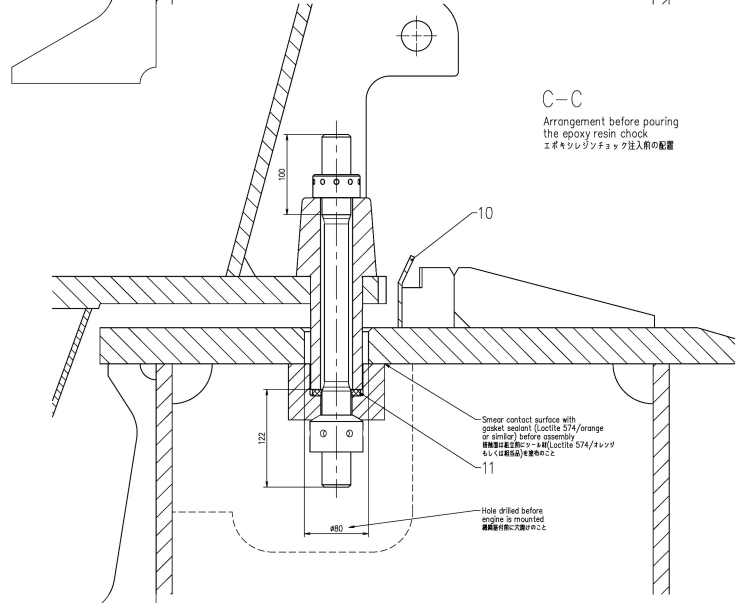
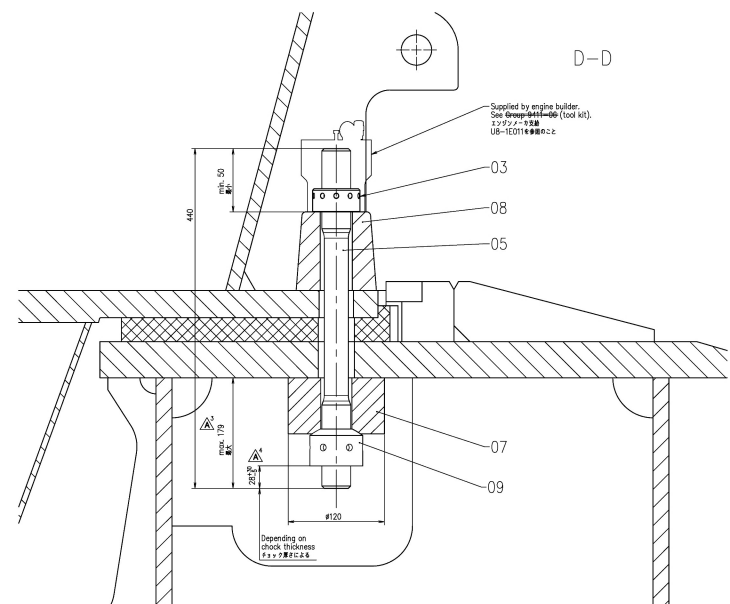
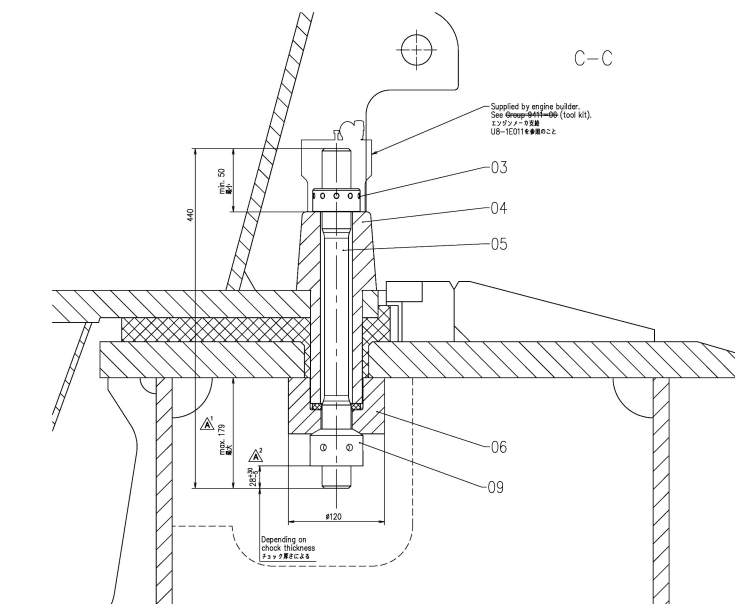
THIS DRAWING IS THE PROPERTY OF JAPAN ENGINE CORPORATION AND SHALL NOT BE REPRODUCED, NOT BE USED TO FURNISH ANY INFORMATION FOR MAKING DRAWINGS OR APPARATUS EXCEPT FOR THE CASE WHERE JAPAN ENGINE CORPORATION AGREES WITH WRITTEN MATERIALS.

COMMON VARIATION OF TOLERANCE (M.M)	RATINGS OF NOMINAL DIMENSION	OVER	OVER	OVER	OVER	OVER	OVER	OVER	OVER	
		0.1	0.2	0.3	0.5	0.8	1.2	2.0	2.0	2.5
TOLERANCE		+0.1	+0.2	+0.3	+0.5	+0.8	+1.2	+2.0	+2.0	+2.5

1st ANGLE PROJECTION	ISO METRIC SCREW THREADS
REVISIONS	NO. DESCRIPTION (DATE) ZONE AP. PRO. ED. CHECK. ED.
1	寸法変更した。 2017-12-26 C方式変更管理書 No. UC11257 B, D-2 新 今午 取替

PLAN RECORD	PREVIOUS DRAWING
0-DAAD013360/C(3/3)	

1
2
3
4
5
6



前図と引換のこと

基本図

THIS DRAWING IS THE PROPERTY OF JAPAN ENGINE CORPORATION. AND SHALL NOT BE REPRODUCED, NOT BE USED TO FURNISH ANY INFORMATION FOR MAKING DRAWINGS OR APPARATUS EXCEPT FOR THE CASE WHERE JAPAN ENGINE CORPORATION AGREES WITH WRITTEN MATERIALS.

COMMON TOLERANCE (M.M.)	RANGES OF NOMINAL DIMENSION										
	OVER 0.5 TO 3	OVER 3 TO 6	OVER 6 TO 30	OVER 30 TO 120	OVER 120 TO 400	OVER 400 TO 1000	OVER 1000 TO 2000	OVER 2000 TO 4000	OVER 4000 TO 6000	OVER 6000 TO 10000	OVER 10000 TO 16000
TOLERANCE	±0.1	±0.2	±0.3	±0.5	±0.8	±1.2	±2.0	±2.0	±2.5	±2.5	

See drawing 1/3,2/3

(*1) This drawing is reduced on a scale of 60% to the written scale.
(*1) 本図は表記尺量の60%で表記している。

DATE	2013.10.16	APPROVED	6UEC33LSE
OWNER	JAPAN ENGINE CORPORATION	CHECKED	ENGINE SEATING/FOUNDATION (3/3)
ORDER NO.		DRAWN	台板据付要領図 (3/3)
ITEM NO.		SCALE	1/2(*1)
REVISIONS		DRAWING NO.	U1-1E268
		REV. NO.	52-11
		ISSUED	A

U1-1E268 A U1-1E268 A