

A

B

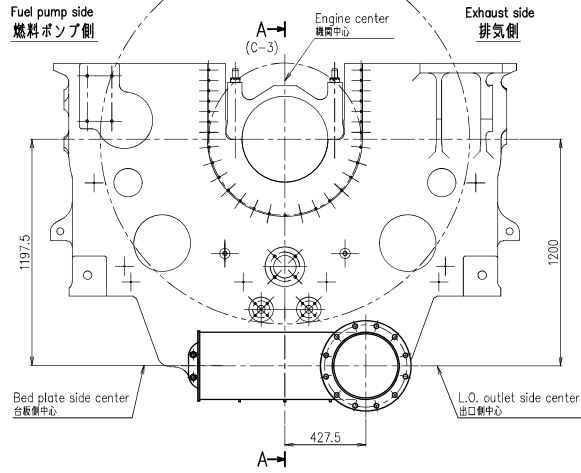
C

D

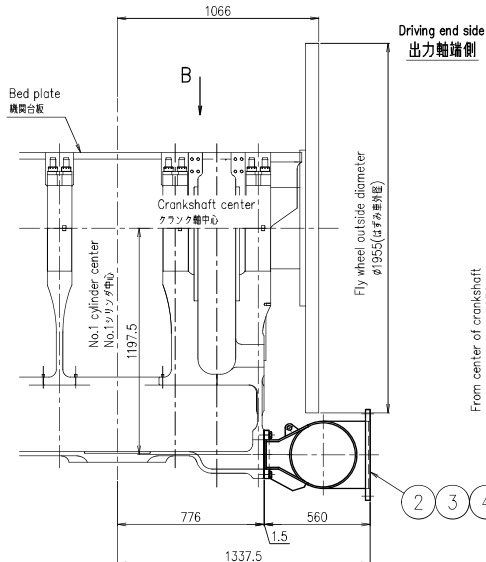
E

A2

- ① 5,6 cyl.
- ⑤① 7,8 cyl.

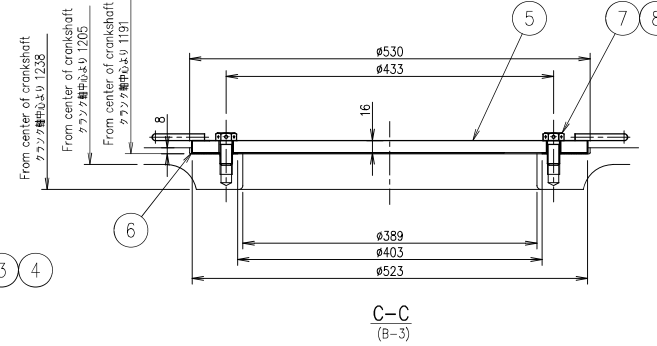


View from driving end side
出力軸端側より見る



View from fuel pump side
燃料ポンプ側より見る

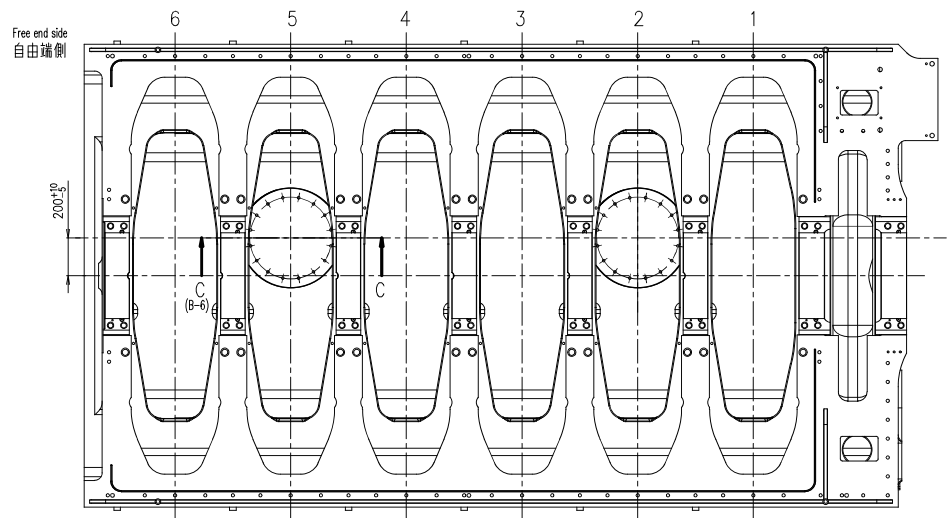
Driving end side
出力軸端側



C-C
(B-3)

SURFACE FINISHNESS	RATINGS	UNDER	UNDER	UNDER	UNDER	SPR-BA OHED SURFACE	PREVIOUS DRAWING U1-1E460/A
	(μ)	0.8	6.3	25	TOO		
REVISIONS							
NO.	UC NO.	DESCRIPTION	DATE	ZONE	APP-PROVED	CHECK-ED	DRAWN

鋳物台板用



Driving end side
出力軸端側

Engine type	X: Applied
UEC33LSE-C2	×
UEC35LSE-Eco-B2	×
UEC35LSE-Eco-C1	×
UEC35LSE-B2	×
UEC35LSE-C1	×
UEC35LSJ	×

(In the case of 6 cylinder)
B (6シリンダの場合を示す)
(C-1)

COMMON VARIATION OF TOLERANCE (MACHINING) (M.M)	RATINGS OF NOMINAL DIMENSION	OVER	OVER	OVER	OVER	OVER	OVER	OVER	OVER	
		0.5 TO 6	6 TO 30	30 TO 120	120 TO 400	400 TO 1000	1000 TO 2000	2000 TO 4000	4000 TO 8000	8000 TO 16000
TOLERANCE		+0.1	+0.2	+0.3	+0.5	+0.8	+1.2	+2.0	+2.0	+2.5

ACAD

NO.	DESCRIPTION	MATERIALS	TEST P.	1-PIECE	TOTAL	WEIGHT (kg)	QUANTITY PER SET	REMARKS
51	Arrangement of lub. oil outlet 台板油落とし要領図 (後端落し)					272.9	1組	For 7,8 cyl.
8	Wire 針金 φ1.6×5000L	SWMG1					1 1	
7	Hexagon Head Bolts With Wire Hole 針金穴付六角ボルト M16×40	SS400				0.1	32 48	
6	Gasket ガスケット	Tombo トンボ#1995					2 3	
5	Cover 蓋	SS400				26.6	2 3	
4	10.9-Bolts 10.9 六角ボルト M20×50	SCM435Q				0.2 3.7	20 20	
3	Gasket ガスケット	Tombo トンボ#1995				0.3	1 1	
2	Outlet pipe assembly 台板潤滑油出口金物組立					184.3	1 1	
1	Arrangement of lub. oil outlet 台板油落とし要領図 (後端落し)					244.7	1組	For 5,6 cyl.

JAPAN ENGINE CORPORATION	APPROVED	木下	APPROVED	岡村	CHECKED	吉川	DRAWN	甘利	DATE DRAWN	2022.3.7	DRAWING NO.	U1-1E471	REVNO.	1/1
<p style="text-align: center;">UEC33/35LSE/-Eco/LSJ ARRANGEMENT OF LUB. OIL OUTLET (DRIVING END CONNECTION) 台板油落とし要領図 (後端落し)</p>														
<p>1st ANGLE PROJECTION SCALE 1/20</p>														