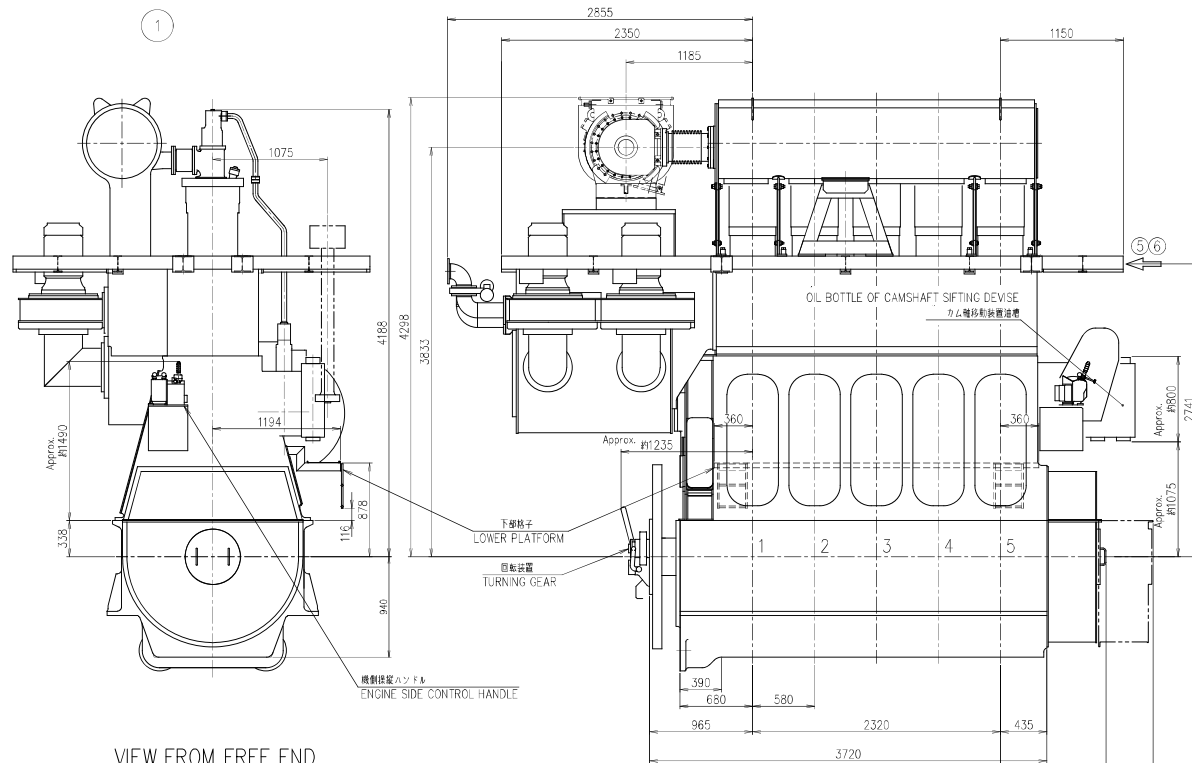
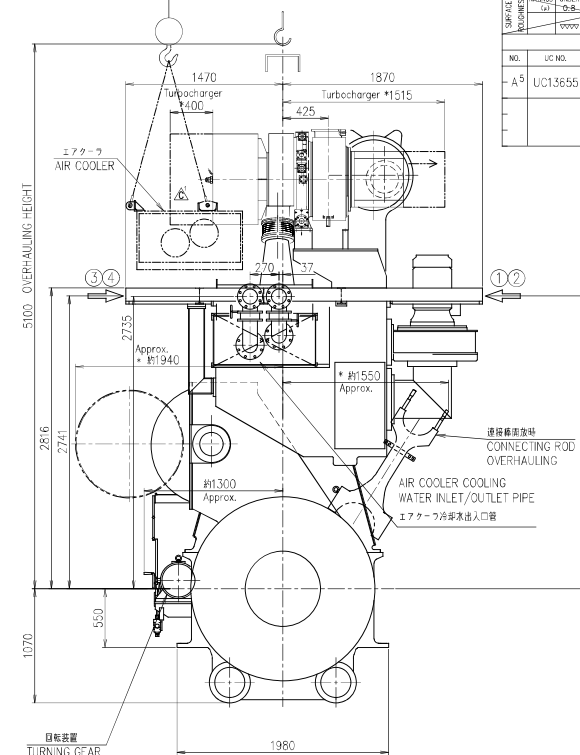


SHEET NO.	RAISED	UNREV	UNREV	UNREV	UNREV	APPROVED	PREVIOUS DRAWING	
	(a)	0-8	6-3	26	100			
							U1-0N005	
REVISIONS								
NO.	LC NO.	DESCRIPTION			DATE	ZONE	APP-PROV'D	CHK'D
A5	U1.3655	・A/C需要関係図を変更した。 ・ヒストリ安置位置変更。			2022.2.10	F-1 C-3 0-5	飯澤	吉川 田



VIEW FROM FREE END  
(FORE)



VIEW FROM DRIVING END  
(AFT)

VIEW FROM EXHAUST SIDE  
(STARBOARD)

前読置の開放スペース  
(IN THE CASE OF HEAVY TUNING WHEEL)  
( $IR^2 = 1000 \text{ Kg} \cdot \text{m}^2$ )

PORT

FORE

STARBOARD

AUXILIARY BLOWER  
補助ブロアー

AFT

AIR COOLER COOLING WATER  
INLET/OUTLET PIPE CAN BE  
REMOVED WHEN ENGINE INSTALL  
AND AIR COOLER OVERHAULING.

エアクーラ冷却水出入口管は機関搭載時  
及びエアクーラ取外し時に取外し可。

WHEN EXTRACT AIR COOLER,  
REMOVE SILENCER OF TURBOCHARGER.  
エアクーフ抜出時は過給機サイレンサーを外す。

CAMSHAFT OVERHAULING  
(CAMSHAFT GEAR)

 REMOVABLE AREA OF ENGINE SIDE FLOOR  
PLATE IN OVERHAULING AIR COOLER  
エアクーラ抜出時の機側床板取り外し範囲

#### POSITION OF TOP BRACING ATTACHMENT POINTS

←: 防振入テ一配置可能位置

← 防振ステー 設置可能位置			EXH. SIDE		PUMP SIDE		FREE END	
	TYPE	TOTAL	①	②	③	④	⑤	⑥
CASE1	FRICTION	4	○	○			○	○
CASE2	FRICTION	4			○	○		
CASE3	FRICTION	6	○	○	○	○	○	○

\* SPACE FOR REMOVAL  
開放スペース

		1	GENERAL ARRANGEMENT					1	
		全装置外形図							
PART NO.		MARK	DESCRIPTION		MATERIALS	TEST	1-PIECE	TOTAL	品名
							MODIFY QTY	QUANTITY PER SET	数量
承認 部				5UEC33LSH-C2				部品	
APPROVED	江 戸	APPROVED			GENERAL ARRANGEMENT				組立
	蔵 真				(OUTLINE)				工程
CHECKED	西 川	CHECKED			全装置外形図		1/1		
DRAWN	甘 利	DRAWN			(MET133MB) TWt		00-00		
1st ANGLE PROJECTION		DATE	2021.11.12		DRAWING NO.		REV. NO.		
		SCALE	1/25		U1-ON010		A		図
*We'll shall comply with JIS (Japan Industrial Standards).					JAPAN ENGINE CORPORATION				
*Material shall comply with JIS unless otherwise specified.									

THIS DRAWING IS THE PROPERTY OF JAPAN ENGINE CORPORATION,  
AND SHALL NOT BE REPRODUCED, NOT BE USED TO FURNISH ANY INFORMATION  
FOR MAKING DRAWINGS OR APPARATUS EXCEPT FOR THE CASE WHERE  
JAPAN ENGINE CORPORATION AGREES WITH WRITTEN MATERIALS.

[illegible] JAPAN ENGINE CORPORATION