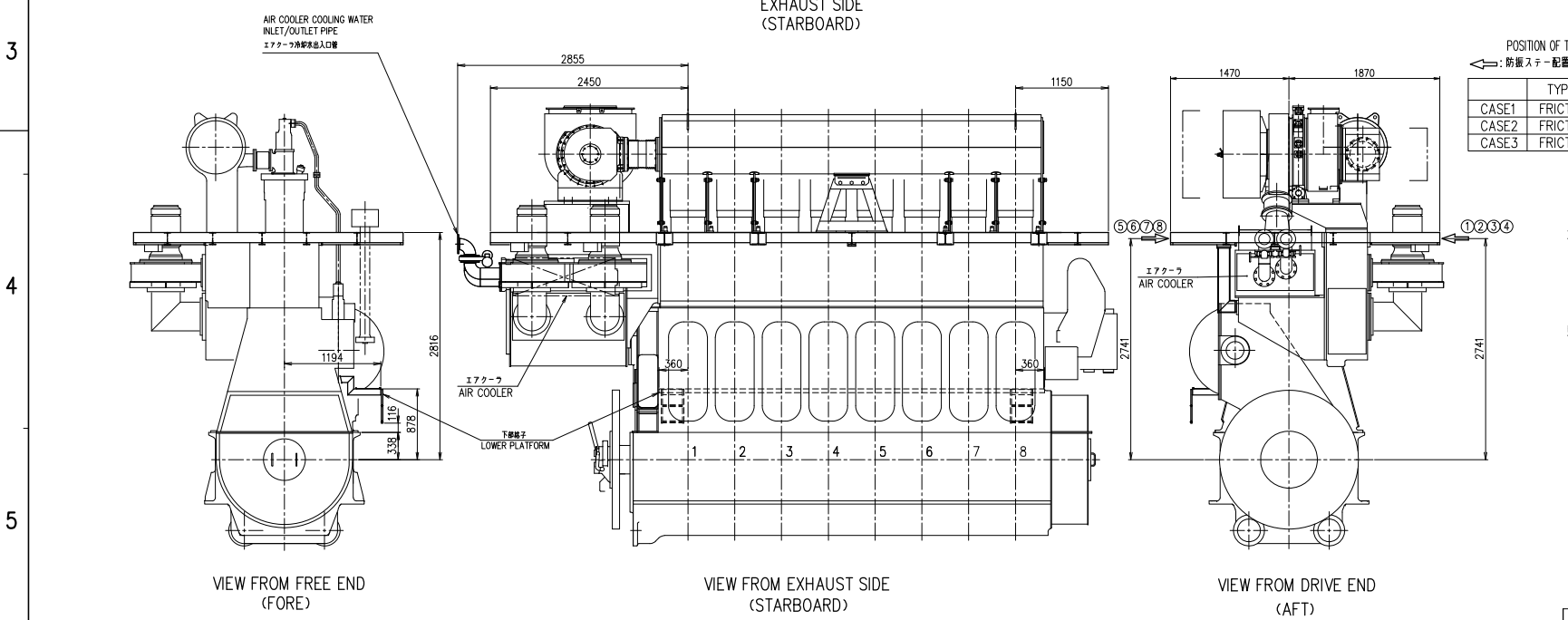
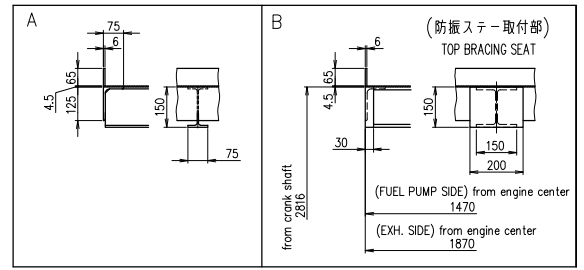
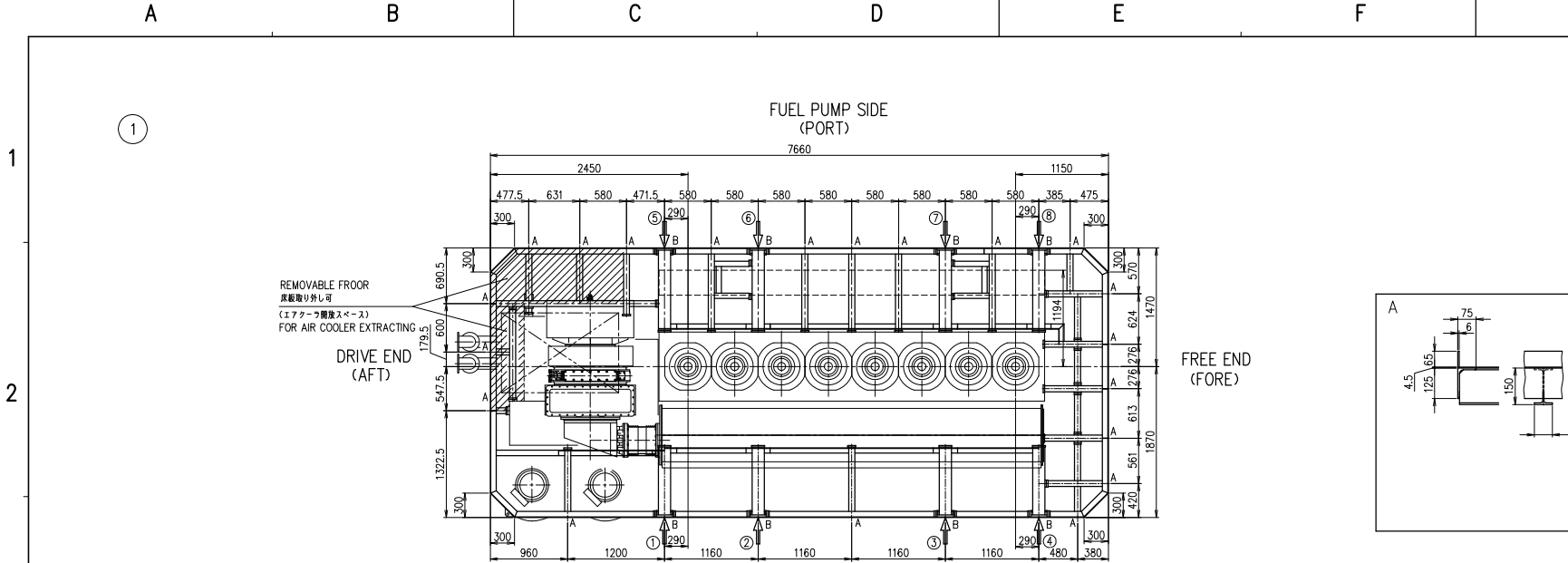


PREVIOUS
DRAWING
U6-6N065,U6-6N003/B

REVISIONS

| NO. | UC NO. | DESCRIPTION | DATE | ZONE | APP- NOVICE | CHECK- DR | DRAWN |
|-----|--------|-------------|------|------|----------------|--------------|-------|
| | | | | | | | |
| | | | | | | | |
| | | | | | | | |
| | | | | | | | |



POSITION OF TOP BRACING ATTACHMENT POINTS.

←: 防振ステー配置可能位置

| TYPE | TOTAL | EXH. SIDE | | | | PUMP SIDE | | | |
|-------|----------|-----------|---|---|---|-----------|---|---|---|
| | | ① | ② | ③ | ④ | ⑤ | ⑥ | ⑦ | ⑧ |
| CASE1 | FRICTION | 4 | ○ | ○ | ○ | | | | |
| CASE2 | FRICTION | 4 | | | | ○ | ○ | ○ | ○ |
| CASE3 | FRICTION | 4 | ○ | | | ○ | | | ○ |

- 備考
1. 次のものは、供給範囲に含まれません。
(A) 上橋格子用外側支柱及び同手摺
(B) 梯子(707 ←上橋格子間)
2. 敷板は、4.5mmを標準とする。
- REMARKS:
1. FOLLOWING SHALL BE SUPPLIED BY THE SHIPBUILDER
(A) HANDRAIL AND PROPS ON UPPER PLATFORM
(B) LARGE STAIRS BETWEEN UPPER-AND LOWER-PLATFORMS
2. PLATE THICKNESS OF PLATFORM
4.5mm THICKNESS

| COMMON VARI- ATION OF TOLERANCE (MACHINING) | RATINGS OF NOMINAL DIMENSION | OVER 0.5 TO 3 | OVER 3 TO 30 | OVER 30 TO 100 | OVER 100 TO 400 | OVER 400 TO 1000 | OVER 1000 TO 2000 | OVER 2000 TO 4000 | OVER 4000 TO 8000 | OVER 8000 TO 16000 |
|--|------------------------------------|---------------------|--------------------|----------------------|-----------------------|------------------------|-------------------------|-------------------------|-------------------------|--------------------------|
| TOLERANCE | | +0.1 | +0.2 | +0.3 | +0.5 | +1.2 | +2.0 | +2.0 | +2.5 | +2.5 |

THIS DRAWING IS THE PROPERTY OF JAPAN ENGINE CORPORATION,
AND SHALL NOT BE REPRODUCED, NOT BE USED TO FURNISH ANY INFORMATION
FOR MAKING DRAWINGS OR APPARATUS EXCEPT FOR THE CASE WHERE
JAPAN ENGINE CORPORATION AGREES WITH WRITTEN MATERIALS.

ACAD

| 1 | | PLATFORM ARRANGEMENT | | 1 | |
|--|--|--|--|--------------------------|--|
| PART NO. | | DESCRIPTION | | QUANTITY PER SET | |
| 8UEC33LSH | | PLATFORM ARRANGEMENT | | 1/1 | |
| (MET42MB) | | 格子配置図 | | 00-00 | |
| DATE: 2023.3.8 | | SCALE: 1/30 | | DRAWING NO. U6-6N066 | |
| 1st ANGLE PROJECTION | | SCALE: 1/30 | | U6-6N066 | |
| Weld shall comply with JIS (Japan Industrial Standards). | | Material shall comply with JIS unless otherwise specified. | | JAPAN ENGINE CORPORATION | |