

(*) 本図は表記尺度の60%で表記している。

DRAWING NO. U1-1E149

1

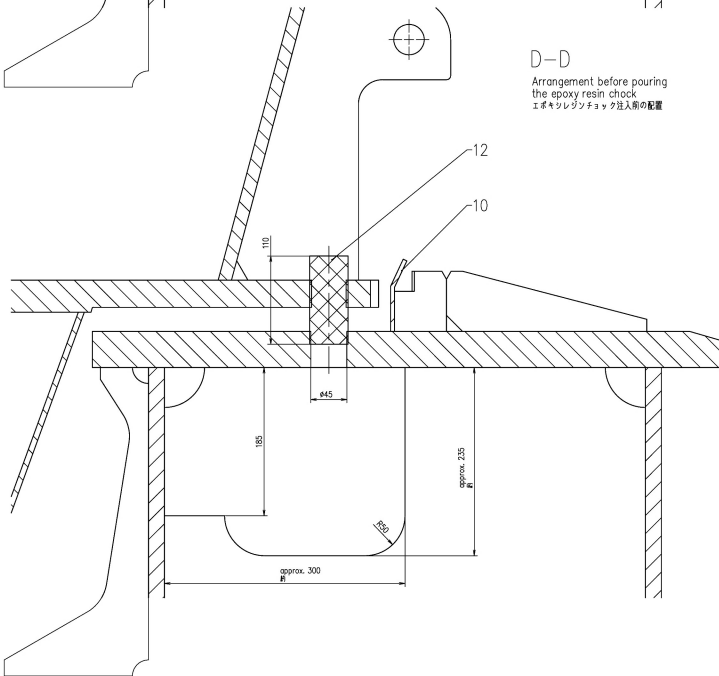
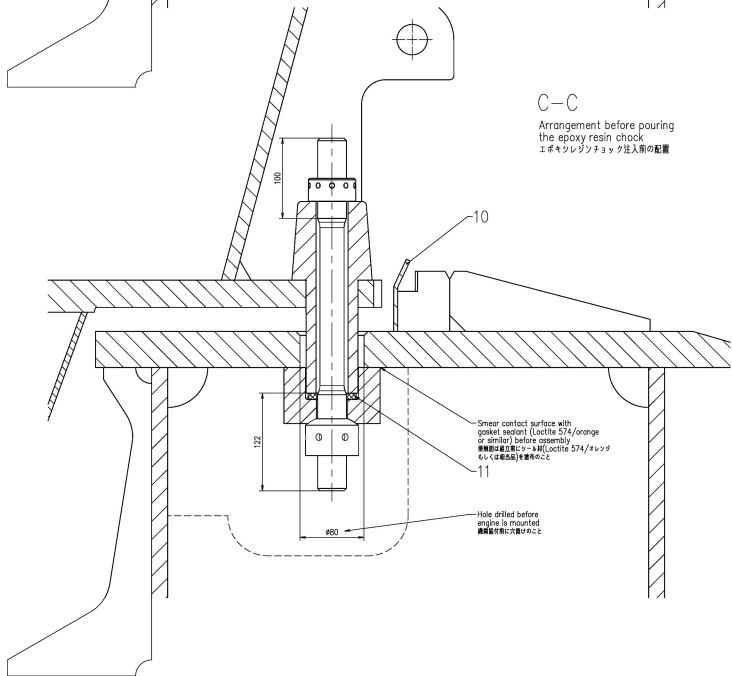
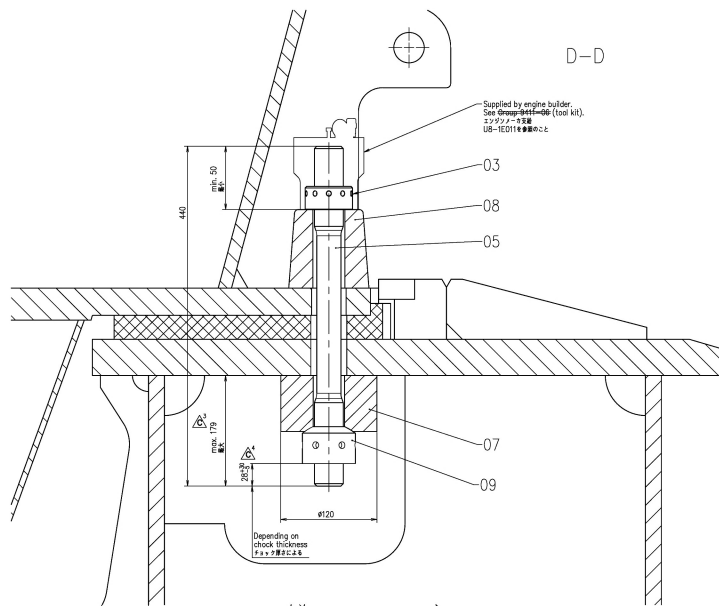
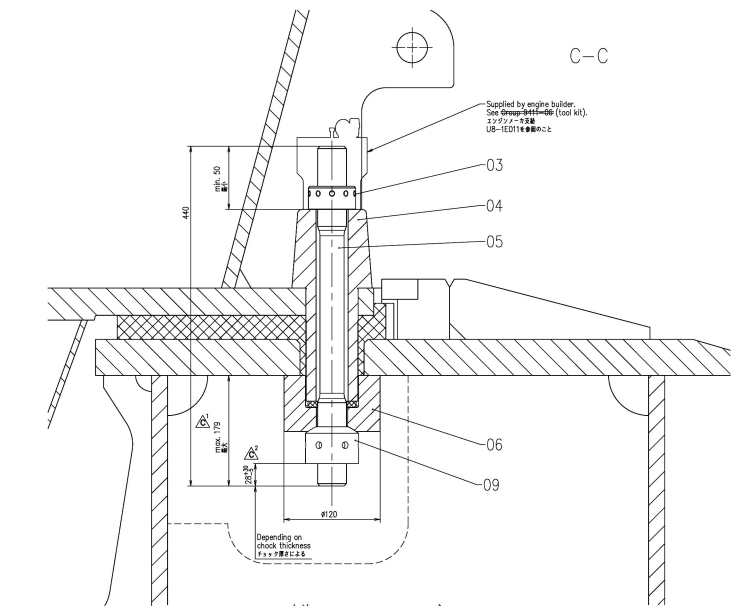
2

3

4

5

6



ISO METRIC SCREW THREADS

1st ANGLE PROJECTION

NO.	DESCRIPTION	(DATE)	ZONE	AP.	CHK.
1	1/3図改正に伴い変更印次を進めた。 本図に変更は無し。	2013.6.25 河本	C-2	江戸	今中
2	2/3図改正に伴い変更印次を進めた。 本図に変更は無し。	2013.10.16 河田	江戸	今中	飯淵
3	寸法変更した。 2017-12-26	○方式変更管理書 No. UC11257	B,D-2	江戸	今中

PLAN RECORD

ISO METRIC SCREW THREADS

PREVIOUS DRAWING

0-DAAD013360/C(1/3)

K.Iizagaki	
T.Tanaka	
H.Okamura	
H.Aoyama	

THIS DRAWING IS THE PROPERTY OF JAPAN ENGINE CORPORATION.
AND SHALL NOT BE REPRODUCED, NOT BE USED TO FURNISH ANY INFORMATION
FOR MAKING DRAWINGS OR APPARATUS EXCEPT FOR THE CASE WHERE
JAPAN ENGINE CORPORATION AGREES WITH WRITTEN MATERIALS.

RATINGS OF NOMINAL DIMENSION	OVER +0.1 TO +0.2	OVER +0.2 TO +0.3	OVER +0.3 TO +0.5	OVER +0.5 TO +0.8	OVER +0.8 TO +1.2	OVER +1.2 TO +2.0	OVER +2.0 TO +2.5
TOLERANCE (M.M)	+0.1	+0.2	+0.3	+0.5	+0.8	+1.2	+2.0

See drawing 1/3,2/3

(*) This drawing is reduced on a scale of 60%
to the written scale.
(*) 本図は表記寸法の60%で表記している。

DATE	2012.10.12	DATE	2012.10.12	DATE	2012.10.12
APPROVED	2012.10.12	APPROVED	2012.10.12	APPROVED	2012.10.12
CHECKED	2012.10.12	CHECKED	2012.10.12	CHECKED	2012.10.12
DRAWN	2012.10.12	DRAWN	2012.10.12	DRAWN	2012.10.12
SCALE	1/2(*)	SCALE	1/2(*)	SCALE	1/2(*)
DRAWING NO.	U1-1E149	DRAWING NO.	U1-1E149	DRAWING NO.	U1-1E149
REV. NO.	52-11	REV. NO.	52-11	REV. NO.	52-11
REV. NO.	52-11	REV. NO.	52-11	REV. NO.	52-11

前図と引換えのこと

基本図