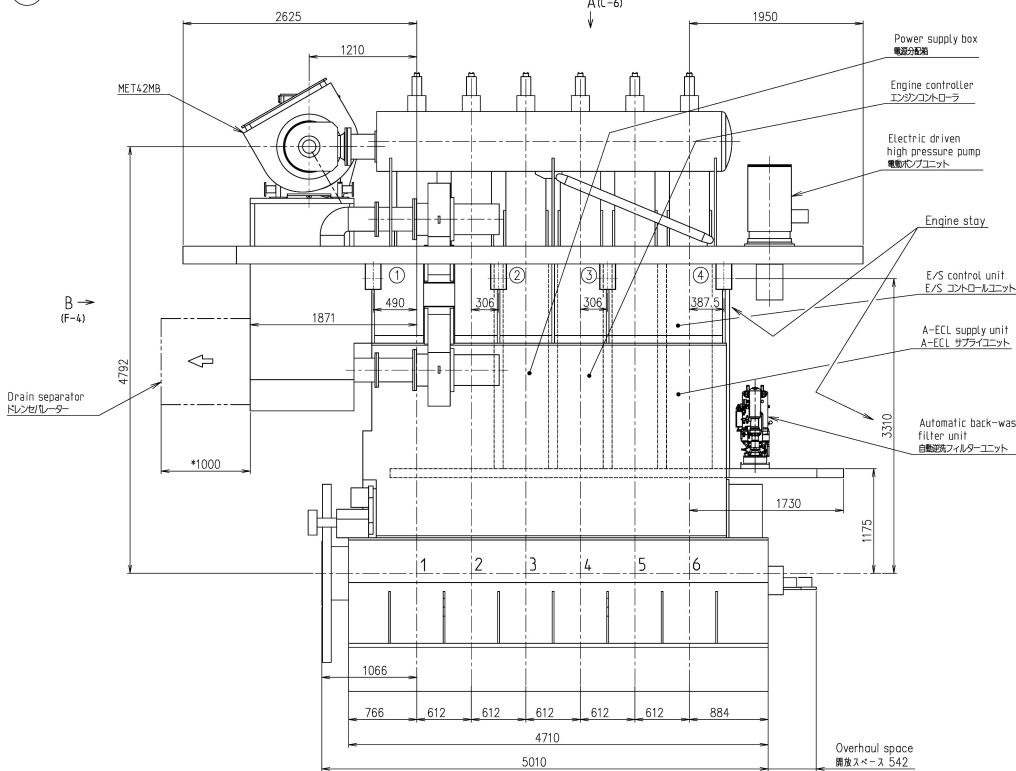
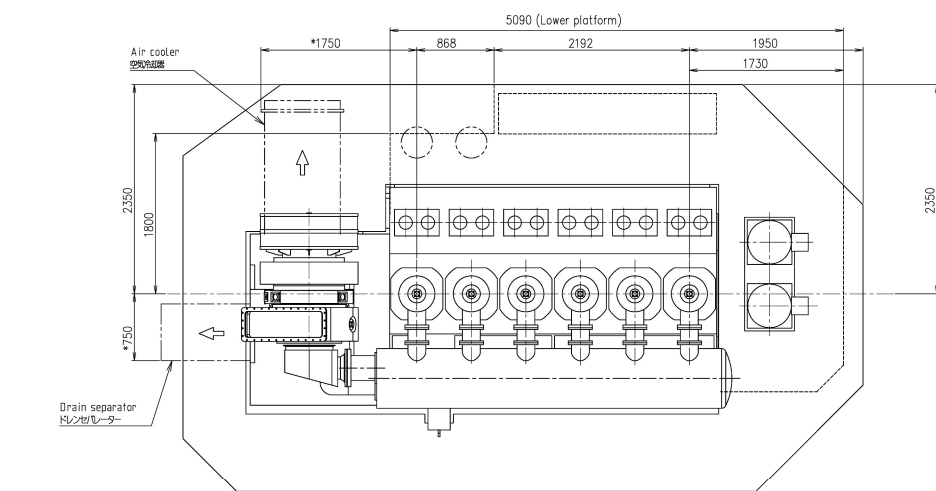


1

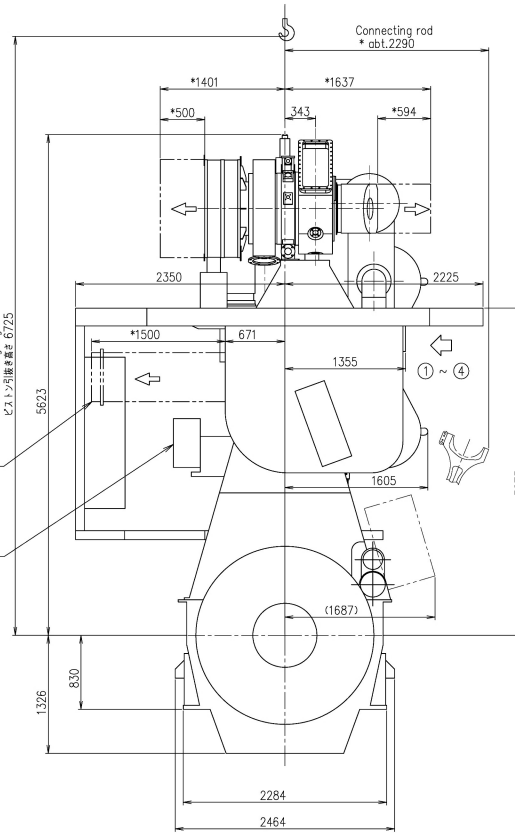


View from exhaust side  
排気側より見る



A  
(C-1)

Platform outline  
機台外形



B  
(A-2)

REVISIONS		PREVIOUS DRAWING		DRAWING	
NO.	UC NO.	DESCRIPTION	DATE	ZONE	APP. CHECK. DRAWN
A	UC11884	全面見直し。	2018-12-19	木下	吉川 二宮

防振ステー配置可能位置

Position of engine stay

Engine stay type		①	②	③	④	Total	Drawing No.
Friction	Case1	○	○	○	○	4	
	Case2	○			○	2	

\*Space for removal  
開放スペース

COMMON VARIATION OF TOLERANCE (M/M)	RATINGS OF NOMINAL DIMENSION	OVER 0.5 TO 6	OVER 6 TO 30	OVER 30 TO 120	OVER 120 TO 400	OVER 400 TO 1000	OVER 1000 TO 2000	OVER 2000 TO 4000	OVER 4000 TO 8000	OVER 8000 TO 16000
TOLERANCE		+0.1	+0.2	+0.3	+0.5	+0.8	+1.2	+2.0	+2.0	+2.5

THIS DRAWING IS THE PROPERTY OF JAPAN ENGINE CORPORATION, AND SHALL NOT BE REPRODUCED, NOT BE USED TO FURNISH ANY INFORMATION FOR MAKING DRAWINGS OR APPARATUS EXCEPT FOR THE CASE WHERE JAPAN ENGINE CORPORATION AGREES WITH WRITTEN MATERIALS.

1		ENGINE OUTLINE VIEW									
PART NO.		MARK		DESCRIPTION		MATERIALS		WEIGHT (kg)		QUANTITY PER SET	
開発部		江 戸		6UEC35LSE-Eco-B2/C1						出 発 先	
CHECKED 吉 川		DRAWN 山 崎		ENGINE OUTLINE VIEW (ME142MB×1)						品 目	
				機台全体外形図 (MET42MB×1)						組 立	
										機 械	
										生 計	
										1/1	
										00-00	
										A	
1st ANGLE PROJECTION		SCALE 1/30		DATE 2015-10-15		DRAWING NO. U1-0E048		REV. NO. A		標 計	
Weld shall comply with JIS (Japan Industrial Standards) Material shall comply with JIS unless otherwise specified.											
JAPAN ENGINE CORPORATION											