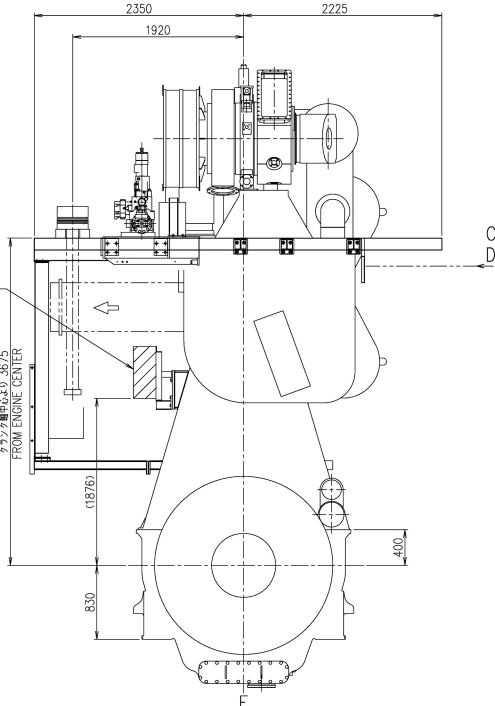
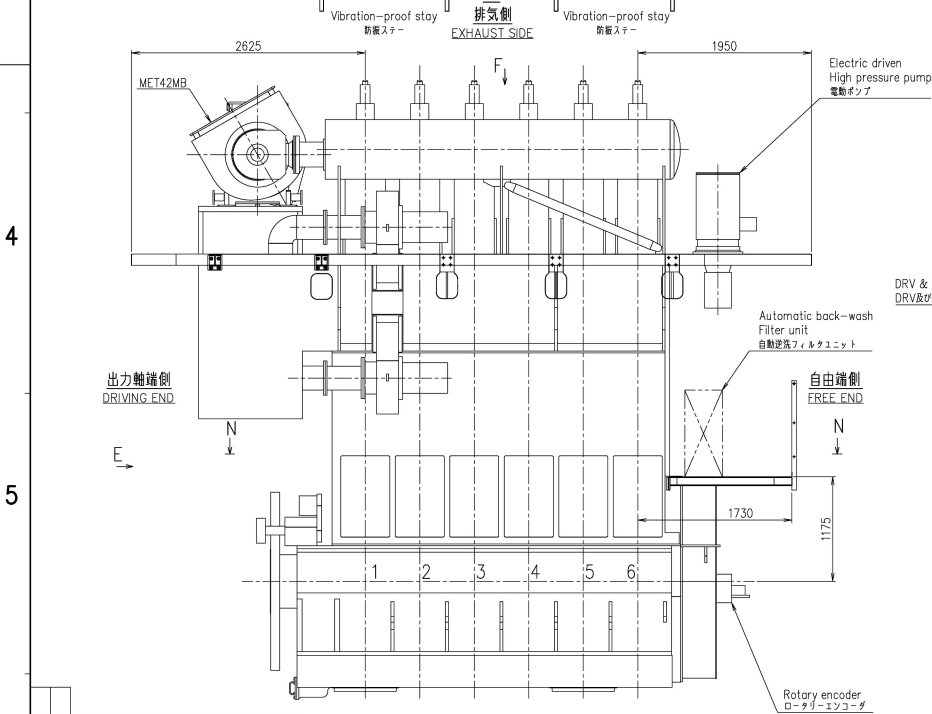
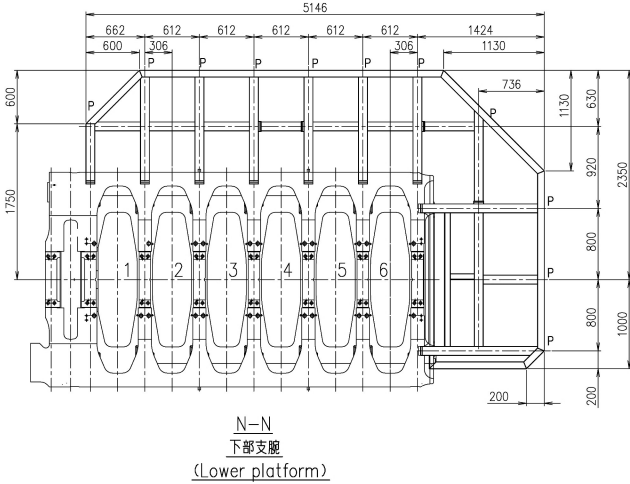
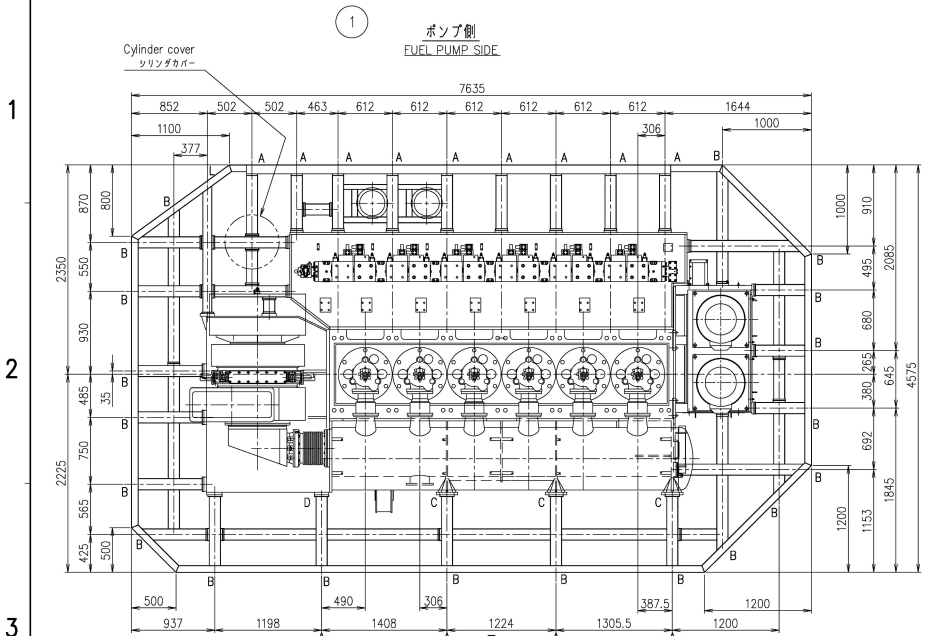


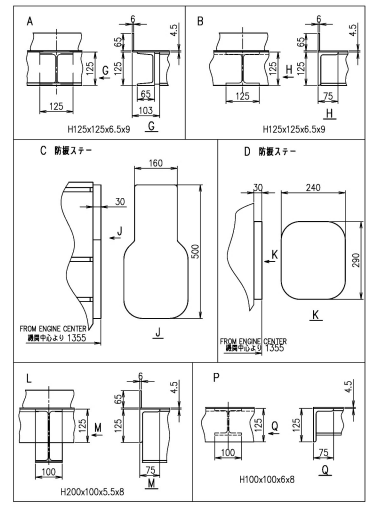
SURFACE FINISH		RATINGS		UNDER 0.8		UNDER 0.3		UNDER 0.15		UNDER 0.075		UNDER 0.038		UNDER 0.019			
1st ANGLE PROJECTION		ISO METRIC SCREW THREADS															
PREVIOUS DRAWING U6-6E233														PLAN RECORD			
REVISIONS												ZONE		AP. PROB		CHK. ED	
NO. DESCRIPTION (DATE)																	



THIS DRAWING IS THE PROPERTY OF MITSUBISHI HEAVY INDUSTRIES MARINE MACHINERY & ENGINE CO., LTD. AND SHALL NOT BE REPRODUCED, NOR BE USED TO FURNISH ANY INFORMATION FOR MAKING DRAWINGS OR APPARATUS EXCEPT FOR THE CASE WHERE MITSUBISHI AGREES WITH WRITTEN MATERIALS.

COMMON VARIATION OF TOLERANCE (M/M)	RATINGS OF NOMINAL DIMENSION									
	OVER 125 TO 150	OVER 150 TO 300	OVER 300 TO 400	OVER 400 TO 1000	OVER 1000 TO 2000	OVER 2000 TO 4000	OVER 4000 TO 8000	OVER 8000 TO 16000	OVER 16000 TO 32000	OVER 32000 TO 64000
TOLERANCE	+0.1	+0.2	+0.3	+0.5	+0.8	+1.2	+2.0	+2.0	+2.5	+2.5

排気側より見る VIEW FROM EXHAUST SIDE



備考  
1. 板厚は4.5mmを基準とする。  
REMARKS  
1. PLATE THICKNESS OF PLATFORM TO BE 4.5mm

基本図

Platform arrangement		格子配置図		1	
DATE	2017-02-09	DRAWING NO.	U6-6E658		
SCALE	1/30, 1/10	REV. NO.	00-00		