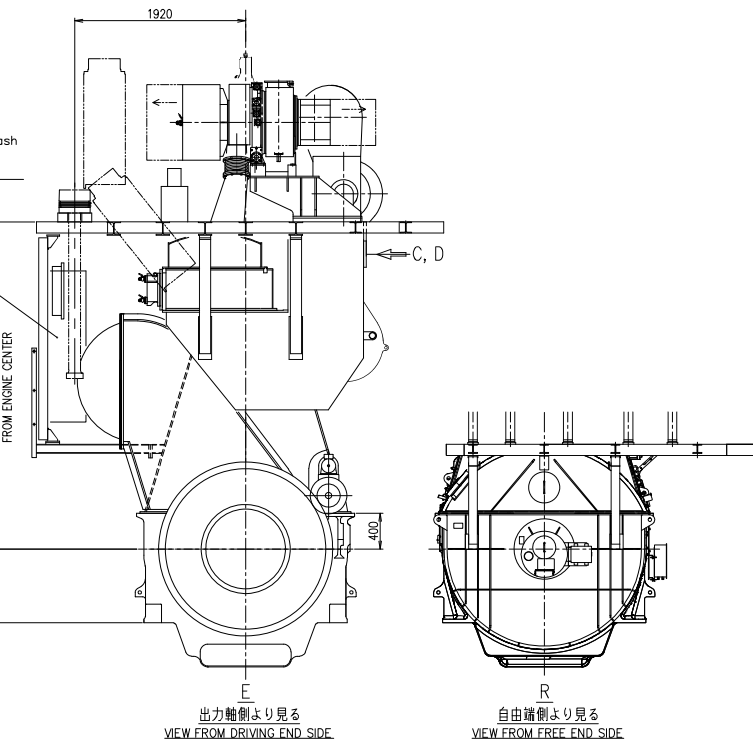
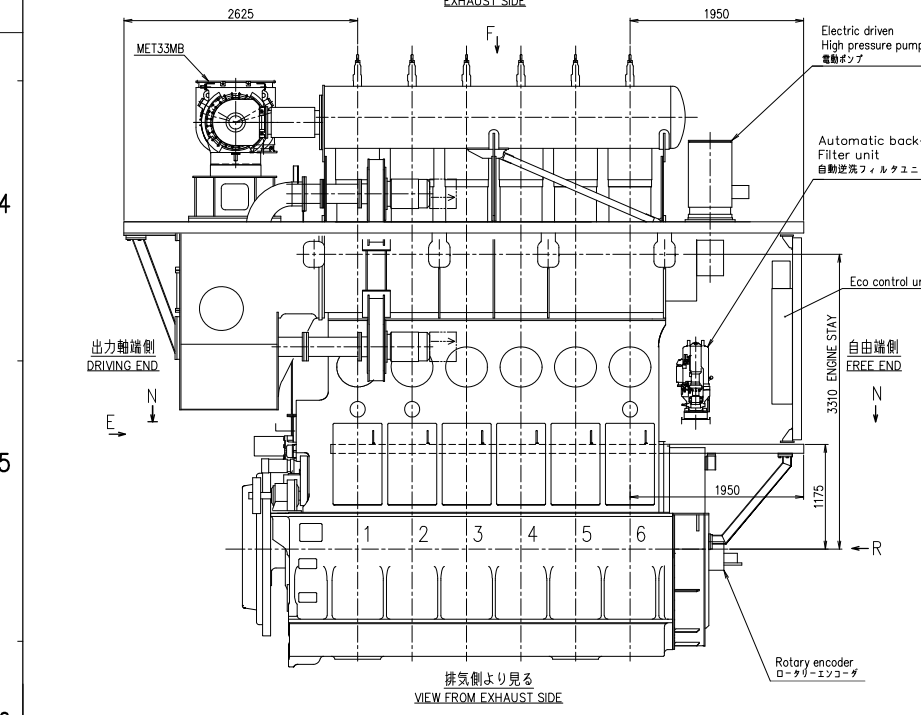
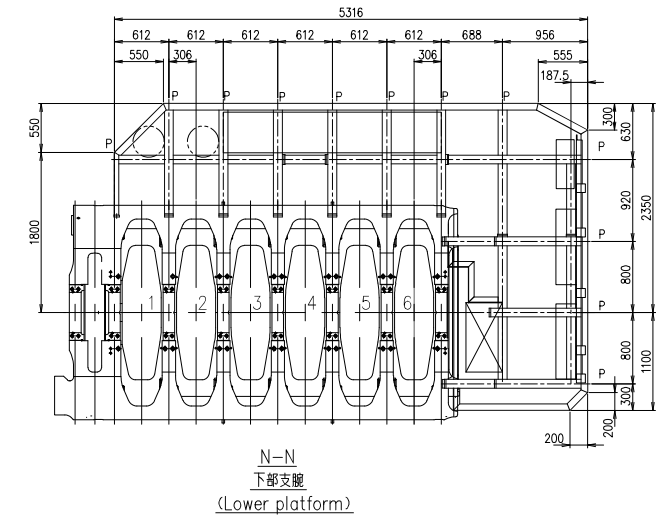
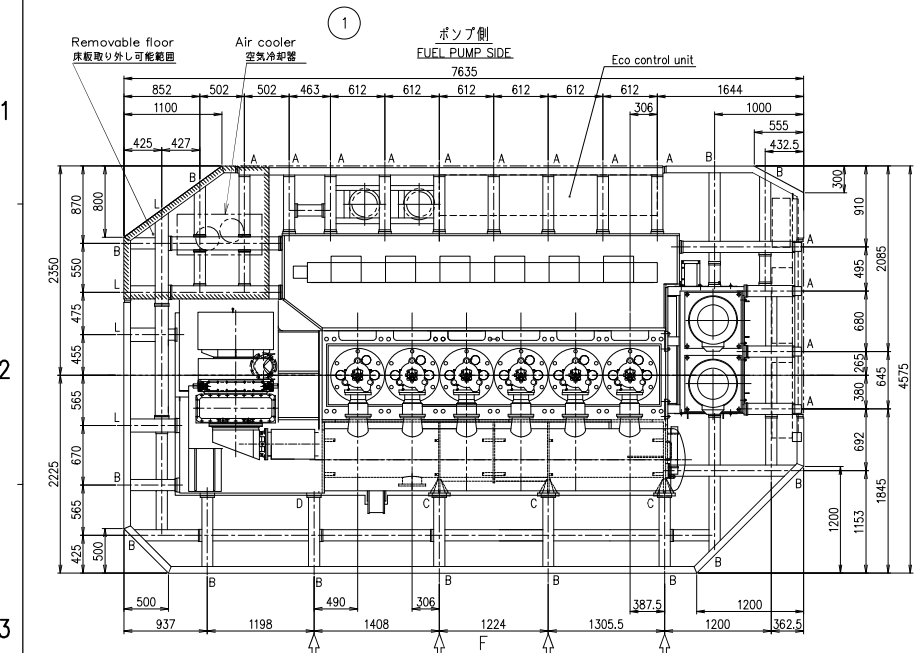
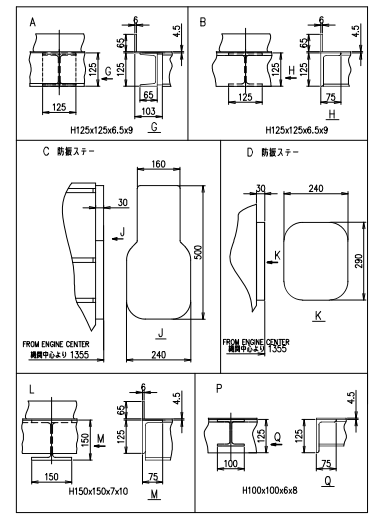


A B C D E F G H A1



REVISED EDITIONS				PREVIOUS DRAWING			
NO.	DATE	DESCRIPTION	DATE	ZONE	APP.	CHECK.	DRAWN
REVISIONS							
A-1	UC13255	1号格子出力軸端側より可動範囲を再見直し。	2021.7.28	A-2	吉川	甘利	
B	UC13618	格子形状を修正した。	2022.01.08		全嶋	水嶋	吉川 龍堂



備考
1. 数値は4.5mmを基準とする。

REMARKS
1. PLATE THICKNESS OF PLATFORM TO BE 4.5mm

COMMON VARIATION OF TOLERANCE (MAXIMUM)	RATINGS OF NOMINAL DIMENSION (MINIMUM)	OVER 0.5 TO 4	OVER 5 TO 30	OVER 30 TO 100	OVER 100 TO 400	OVER 400 TO 1000	OVER 1000 TO 2000	OVER 2000 TO 5000	OVER 5000 TO 10000	OVER 10000 TO 50000	OVER 50000 TO 100000
TOLERANCE		± 0.1	± 0.2	± 0.3	± 0.5	± 0.8	± 1.2	± 2.0	± 3.0	± 5.0	± 8.0

THIS DRAWING IS THE PROPERTY OF JAPAN ENGINE CORPORATION AND SHALL NOT BE REPRODUCED, NOR BE USED, TO PROVIDE ANY INFORMATION FOR MAKING DRAWINGS OR APPARATUS EXCEPT FOR THE CASE WHERE JAPAN ENGINE CORPORATION AGREES WITH WRITTEN MATERIALS.

ACAD

1		Platform arrangement		1		1	
PART NO.	MARK	DESCRIPTION	MATERIALS	QTY REQD	TOTAL QTY	QTY REQD SET	QTY SET
		6UEC35LSJ					
PLATFORM ARRANGEMENT							
格子配置図							
1st ANGLE PROJECTION		SCALE	2021.07.14	DRAWING NO.	U6-6EB05		
Material shall comply with JIS (Japan Industrial Standards)		SCALE 1/30, 1/10		U6-6EB05		B	

JAPAN ENGINE CORPORATION