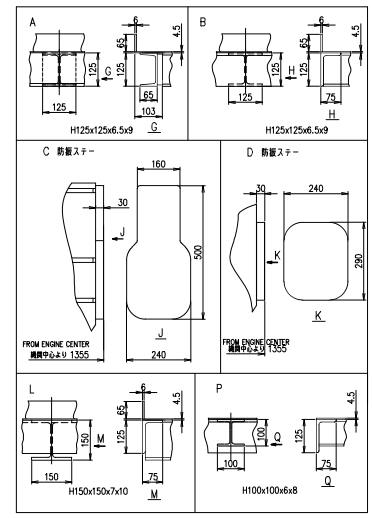
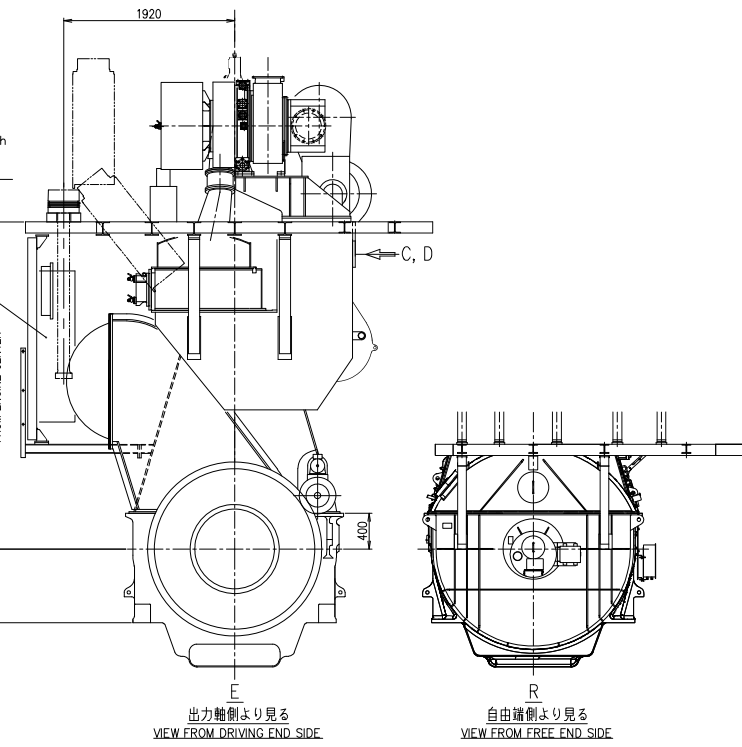
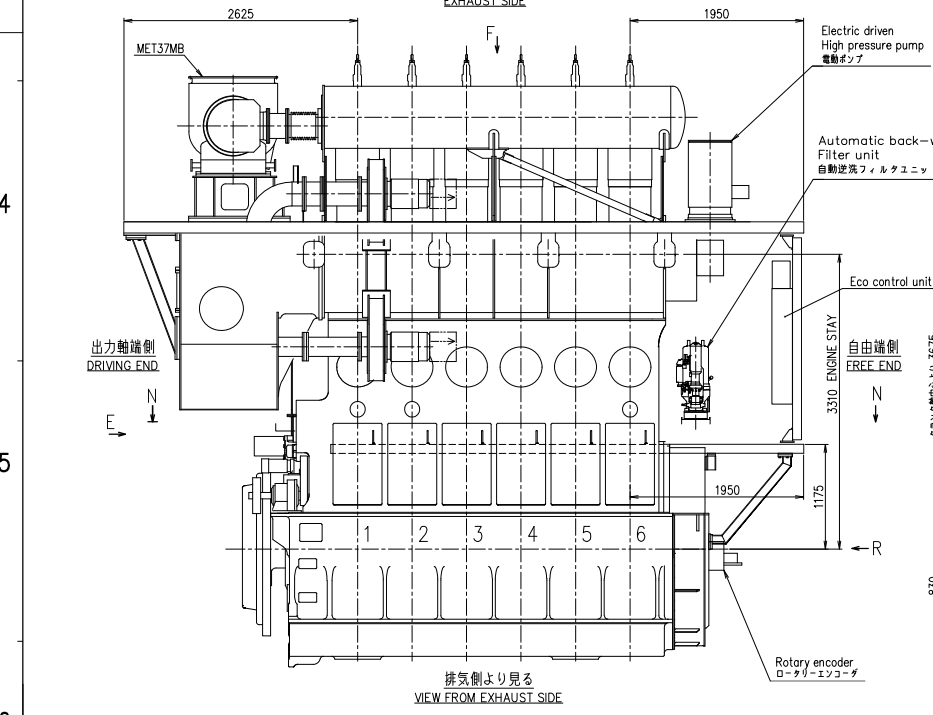
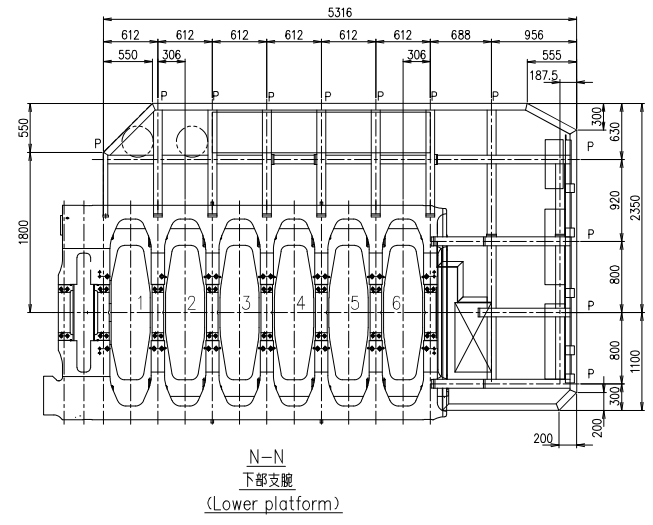
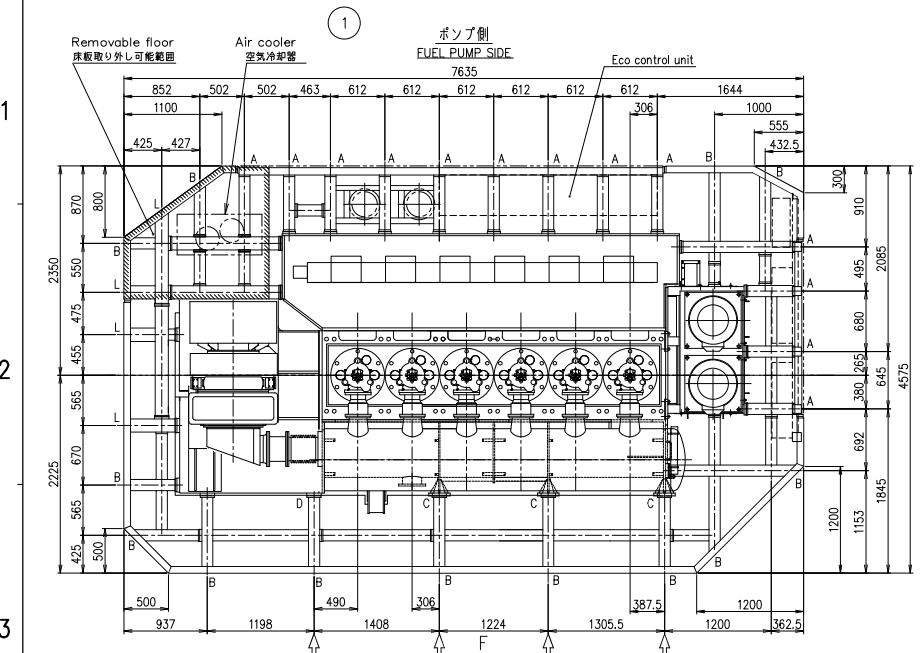


新物台板  
MET37MB

CHECKED		DATE	BY	REVISIONS	PREVIOUS DRAWING
NO.	UC NO.	DESCRIPTION	DATE	ZONE	APP. CHECK-DRWN
A	UC13618	格子配置を見直した。	2022.01.09	全画	水嶋 吉川 義孝



備考  
1. 数値は4.5mmを基準とする。

REMARKS  
1. PLATE THICKNESS OF PLATFORM  
TO BE 4.5mm

COMMON VARIATION OF TOLERANCE (M/M)	RATINGS OF NOMINAL DIMENSION	OVER 0.5 TO 3	OVER 3 TO 10	OVER 10 TO 30	OVER 30 TO 100	OVER 100 TO 300	OVER 300 TO 1000	OVER 1000 TO 3000	OVER 3000 TO 10000	OVER 10000 TO 30000	OVER 30000 TO 100000	OVER 100000 TO 300000	OVER 300000 TO 1000000
		±0.1	±0.2	±0.3	±0.5	±0.8	±1.2	±2.0	±3.0	±5.0	±8.0	±12.0	±20.0

THIS DRAWING IS THE PROPERTY OF JAPAN ENGINE CORPORATION AND SHALL NOT BE REPRODUCED, NOT BE USED TO PROVIDE ANY INFORMATION FOR MAKING DRAWINGS OR APPARATUS EXCEPT FOR THE CASE WHERE JAPAN ENGINE CORPORATION AGREES WITH WRITTEN MATERIALS.

ACAD

1 Platform arrangement		1			
PART NO.	MARK	DESCRIPTION	MATERIALS	PL-PROJ TOTAL	QUANTITY SET SET
6UEC35LSJ		格子配置図			
APPROVED	APPROVED	6UEC35LSJ			
江戸		PLATFORM ARRANGEMENT			
CHECKED	CHECKED	格子配置図			
吉川					
DRAWN	DRAWN	1/1			
甘利		00-00			
1st ANGLE PROJECTION		SCALE	DATE	DRAWING NO.	REV. NO.
		1/30,1/10	2021.12.27	U6-6EB57	A
Material shall comply with JIS (Japan Industrial Standards)					
JAPAN ENGINE CORPORATION					