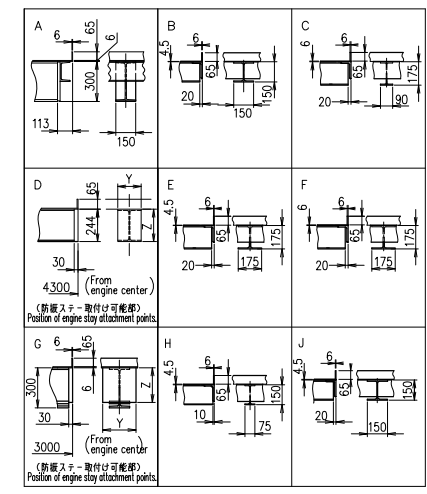
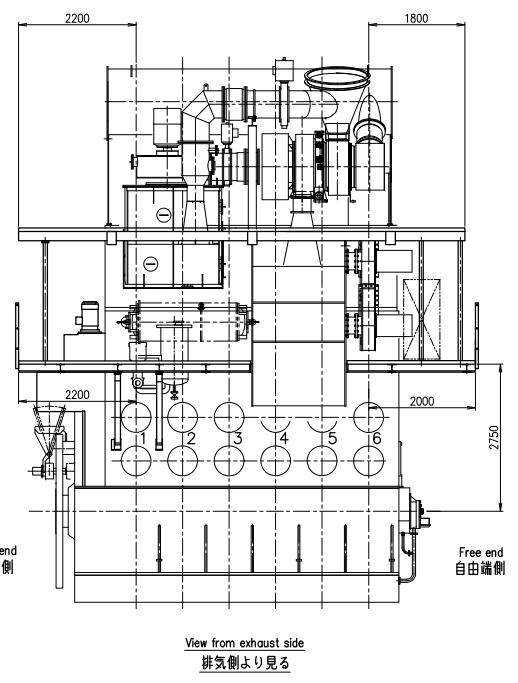
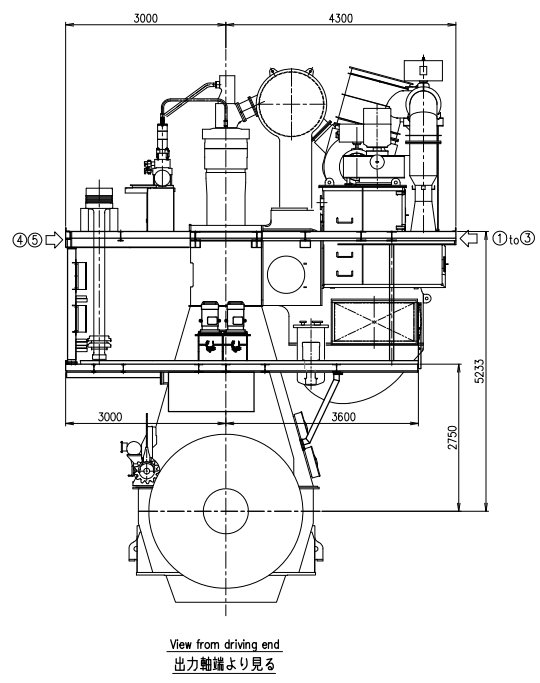
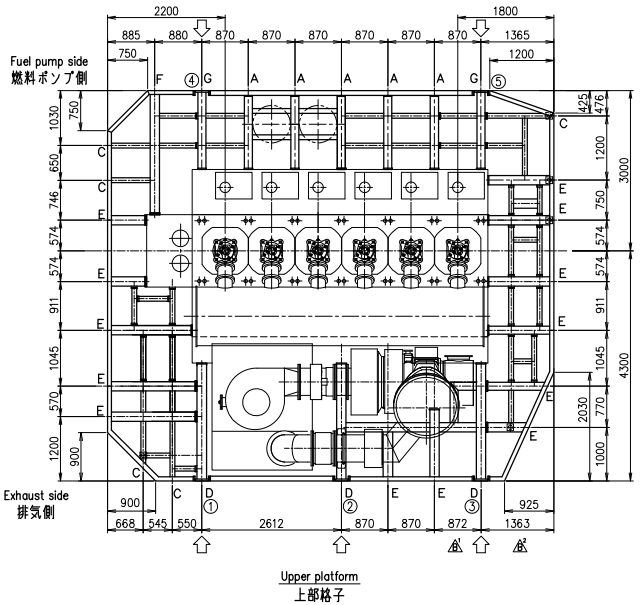
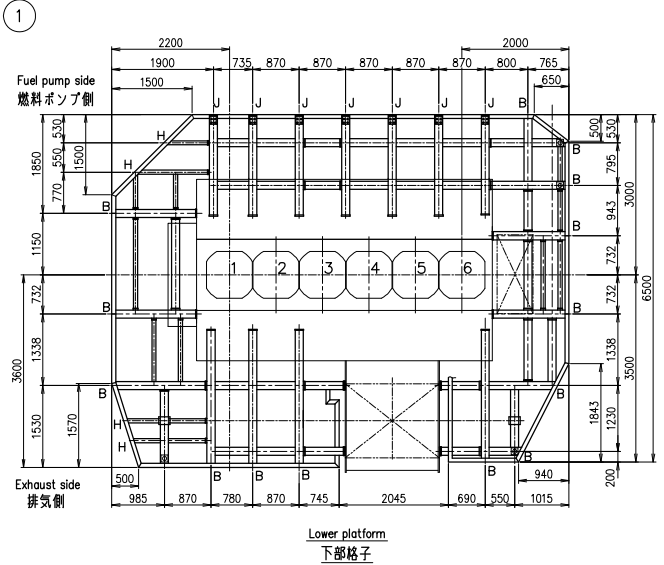


SURFACE TOLERANCE		FINISHES	UNDER	UNDER	UNDER	UNDER	UNDER	PREVIOUS DRAWING
0.1	0.2	0.3	0.4	0.5	0.6	0.7	0.8	U6-6KT08
REVISIONS								
NO.	UC NO.	DESCRIPTION	DATE	ZONE	APP. PRODUCT	CHECK	DR.	DRAWN
A*	UC12837	寸法を変更した。	2020.11.13	A-1,2	飯間	吉川		
B*	UC13088	寸法を変更した。	2021.04.19	E-3	飯間	吉川	甘利	



Position of engine stay attachment points.
 ◀: 防振ステー配置可能位置

Engine stay type	①	②	③	④	⑤	TOTAL	Y	Z
Friction	○	○	○	○	○	3	175	244
Hydraulic	○	○	○	○	○	4	250	260

- 備 考
 1. 次のものは、仕様範囲に含まれません。
 (A) 上部格子用分割型防振ステー
 (B) 梯子 (フロッパー→下部格子及び、下部格子↔上部格子間)
 2. 敷板 上部ポンプ側 T6
 それ以外 T4.5

- Remarks
 1. Following shall be supplied by the shipbuilder.
 (A) Handrail and props on upper platform
 (B) Large stairs between upper- and middle- and lower-platforms.
 2. Plate thickness of platform
 Upper platform (pump side) t=6
 Upper platform (exhaust side) } t=4.5
 Lower platform

1 Platform arrangement		格子配置図		1	
PART NO.	MARK	DESCRIPTION	MATERIALS	1-PIECE TOTAL WEIGHT (kg)	QUANTITY PER SET
開発部	江戸	6UEC50LSH-Eco-C3-EGR			1/1
checked	吉川	Platform Arrangement			1/1
drawn	甘利	格子配置図			64-01
DATE	2020.8.21	DRAWING NO.	U6-6KT78		
1st ANGLE PROJECTION	SCALE	1/50		REV. NO. B	
Must draw comply with JIS (Japan Industrial Standards). Material shall comply with JIS unless otherwise specified.					

1
2
3
4
5
6

COMMON TOLERANCE (MACHINING)	RATINGS OF NORMAL DIMENSION	OVER 0.5 TO 6	OVER 6 TO 30	OVER 30 TO 120	OVER 120 TO 400	OVER 400 TO 1000	OVER 1000 TO 2000	OVER 2000 TO 4000	OVER 4000 TO 8000	OVER 8000 TO 16000
(MM)	TOLERANCE	±0.1	±0.2	±0.3	±0.5	±0.8	±1.2	±2.0	±2.0	±2.5

ACAD