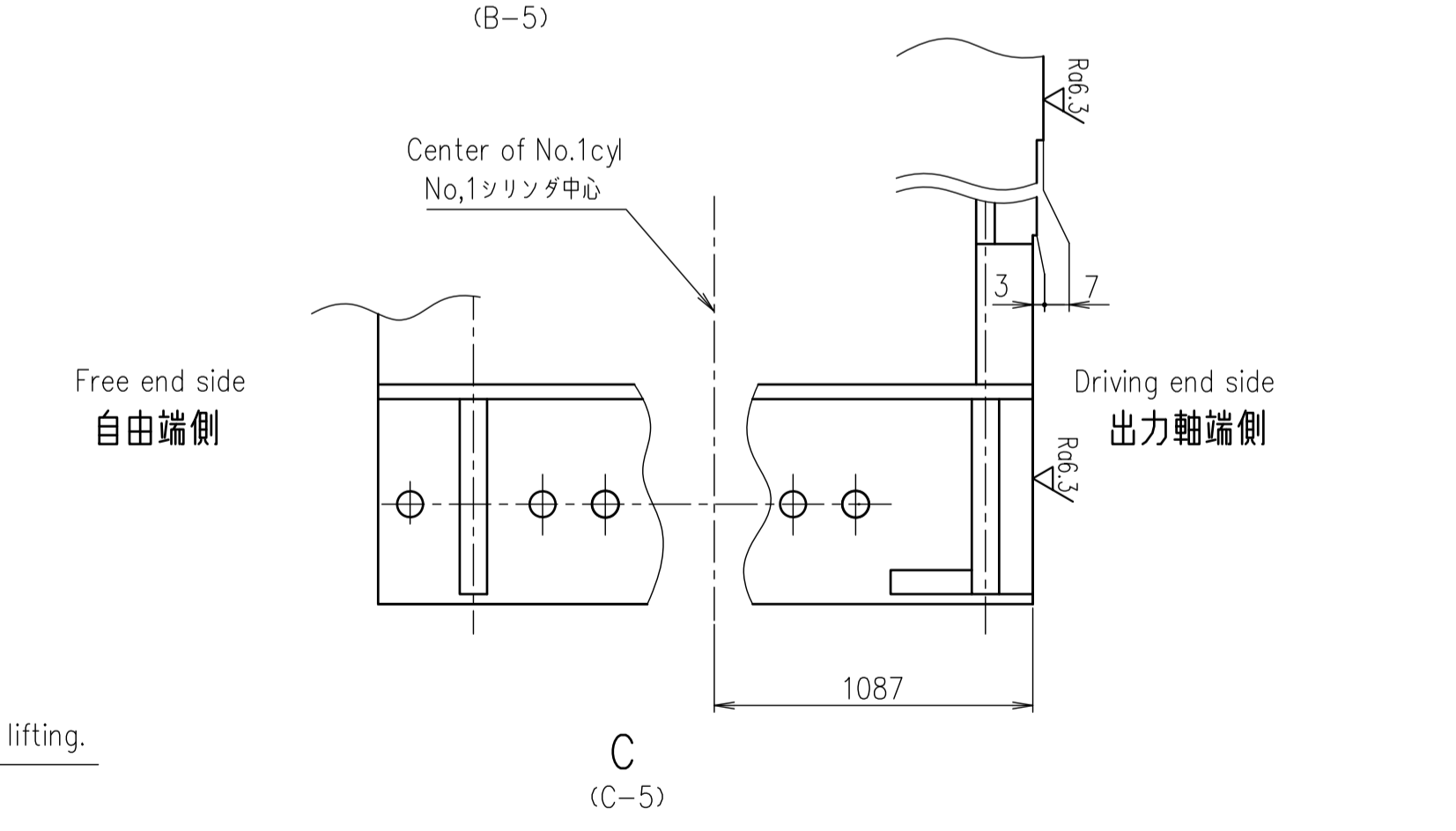
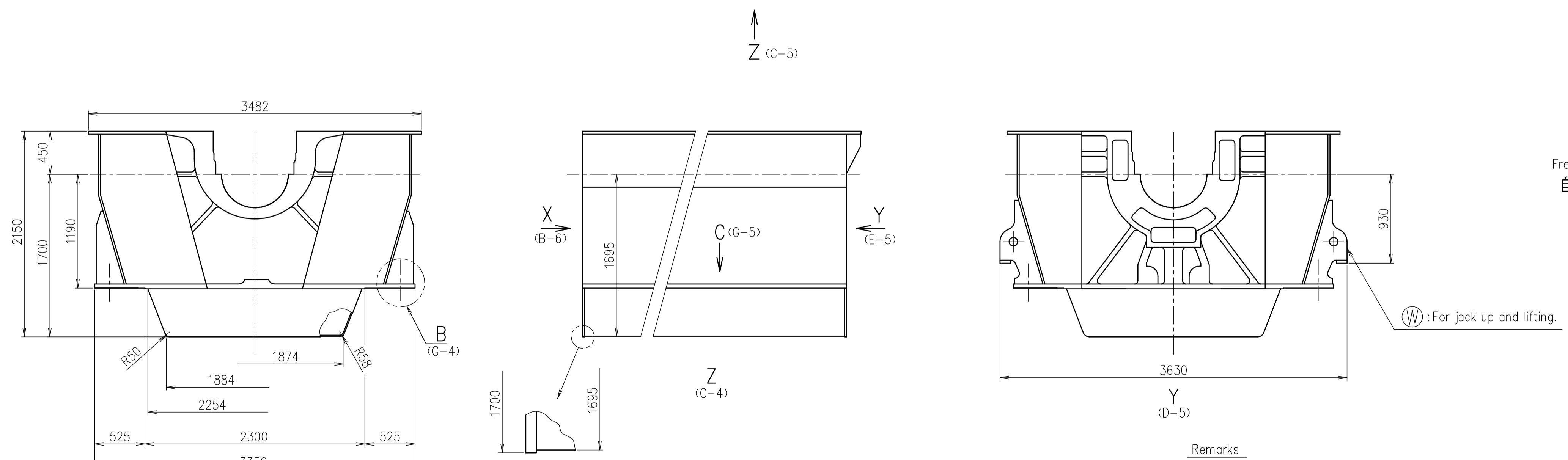
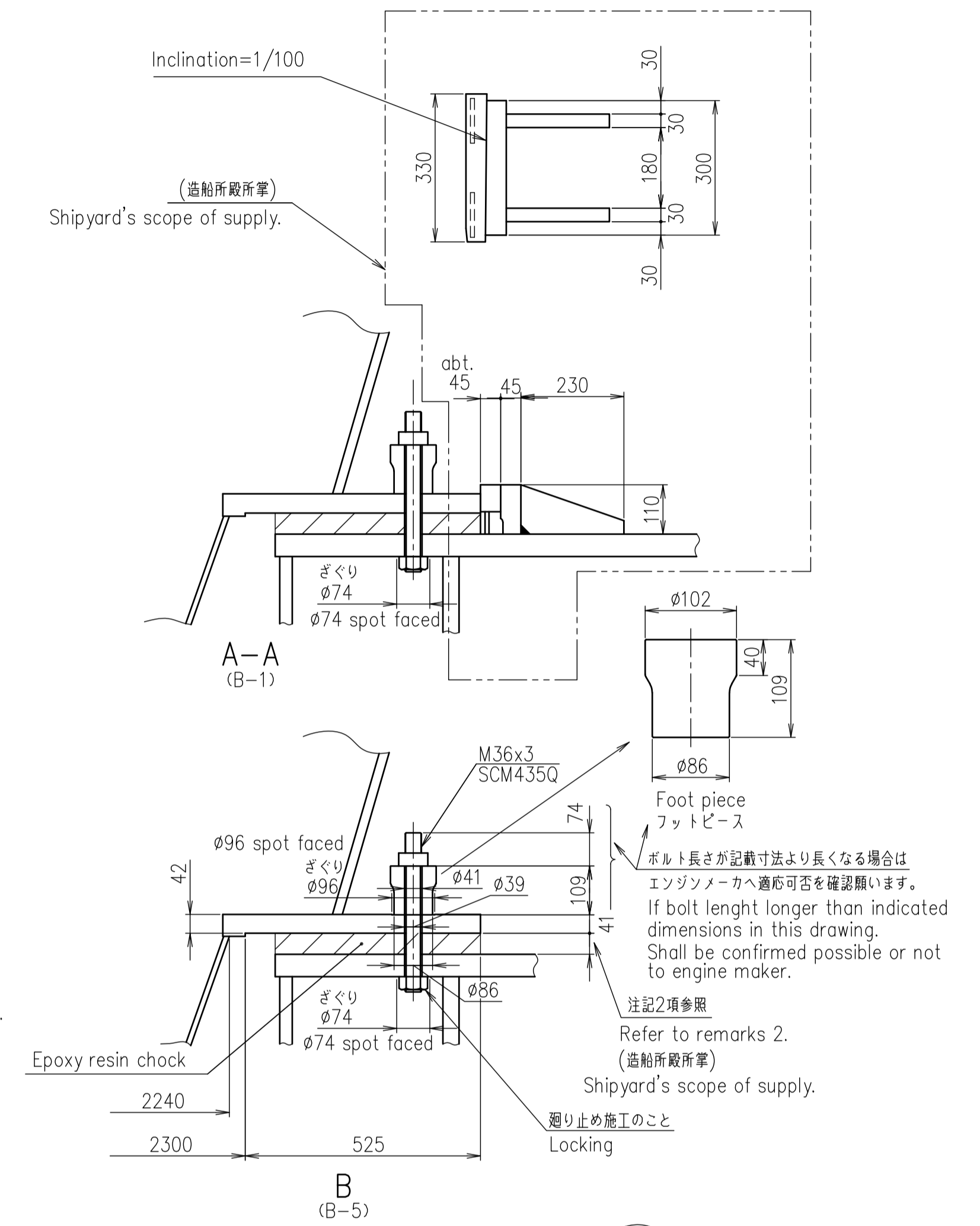
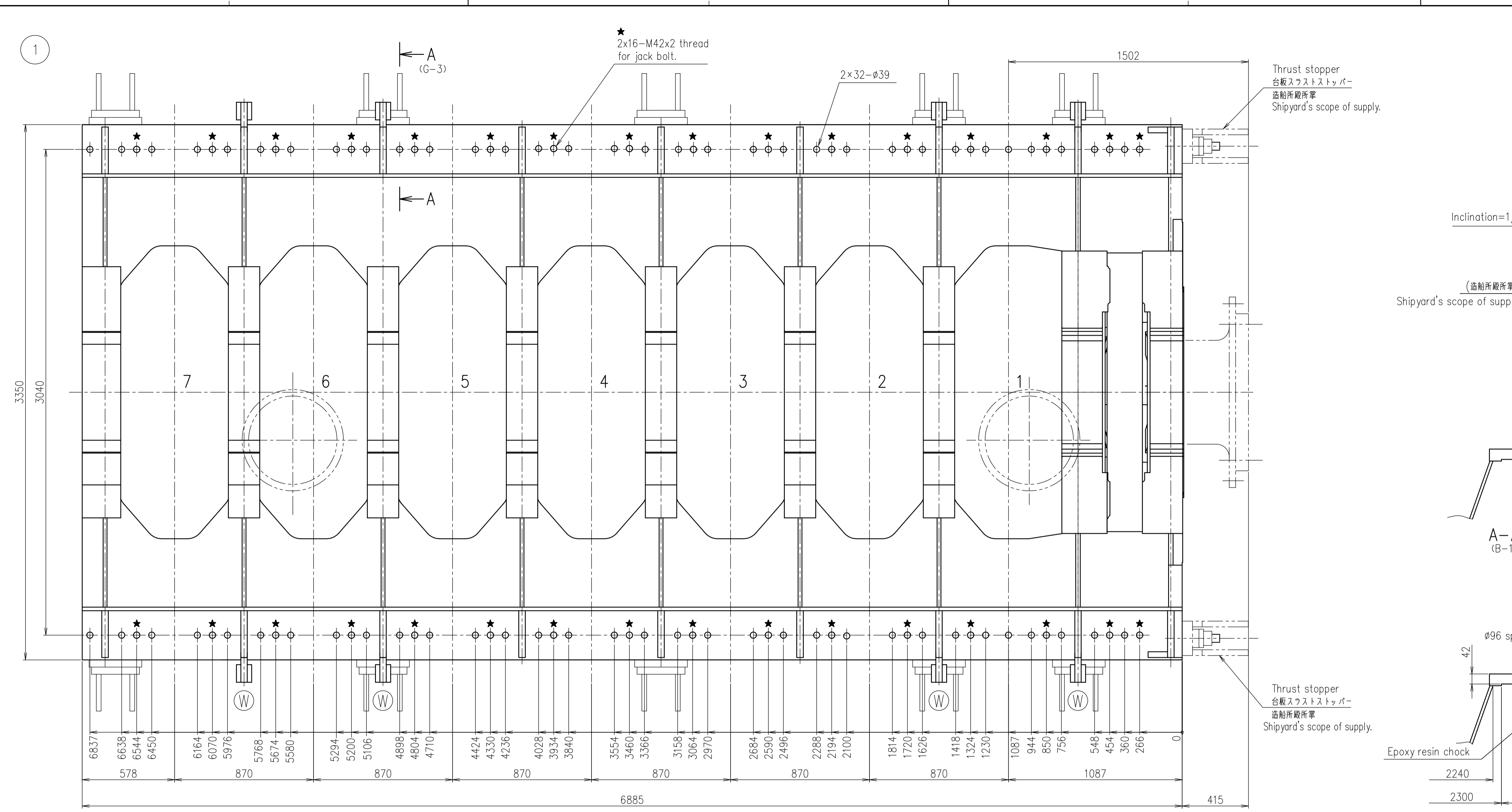


| SURFACE FINISH |     | PREVIOUS DRAWING |   |            |      |            |          |       |
|----------------|-----|------------------|---|------------|------|------------|----------|-------|
| ROUGHNESS      | (a) | UC NO.           | DESCRIPTION                                   | DATE       | ZONE | APP-PROVED | CHECK-ED | DRAWN |
| ▽              | 0.8 | UC10911          | 据付ボルト幅寸法を3050+3040に変更した。<br>ボルト長さに関する注記を追加した。 | 2017-10-05 | 全面   | 青田         | 田中       |       |
| ▽              | 0.8 | UC11525          | 図面種を差し替えた。<br>50LSJを追記した。                     | 2018-06-26 |      | 青田         | 木下<br>吉川 |       |
| ▽              | 0.8 | UC13703          | ジャッキアップ用リブの位置を追記。                             | 2022-02-18 |      | 木下         | 吉川<br>二宮 |       |



|                           |    |
|---------------------------|----|
| No. of cyl.               | 7  |
| No. of holding down bolts | 64 |
| Total No. of bolts        | 64 |
| No. of jack bolts         | 32 |

注記  
1. 台板油落とし箇所は、別途台板油落とし要領図 U1-1K017を参照のこと。  
2. レジンチョックの寸法 (巾、長さ、厚み) は、当該レジンチョックメーカーと相談の上、決定願います。  
3. ★印はジャッキボルト穴を示す。

Remarks  
1.Details of lub.oil outlet shall be referred to dwg. No. U1-1K017.  
2.Dimensions (width,length,thickness) of resin chock shall be discussed between shipyard and resin chock supplier.  
3.★ marks indicates jack bolt hole.

| 1                    | Arrangement of holding down bolt<br>台板据付要領図 |                                  |                |             | 1                         |                  |
|----------------------|---|----------------------------------|----------------|-------------|---------------------------|------------------|
| PART NO.             | MARK  | DESCRIPTION                      | MATERIALS      | QTY         | 1-PIECE TOTAL WEIGHT (kg) | QUANTITY PER SET |
|                      |   | 7UEC50LSH-Eco/50LSJ              |                |             |                           |                  |
| 開発部                  |   | Arrangement of holding down bolt |                |             |                           |                  |
| APPROVED             | 杉原  | 台板据付要領図                          |                |             |                           |                  |
| CHECKED              | 江戸  |                                  |                |             |                           |                  |
| DRAWN                | 吉川<br>田中                                    |                                  |                |             |                           |                  |
| 1st ANGLE PROJECTION |   | DATE DRAWN                       | 2013-10-16     | DRAWING NO. | U1-1K016                  |                  |
|                      |   | SCALE                            | 1/15,1/30,1/10 | REV. NO.    | D                         |                  |

COMMON VARIATION OF TOLERANCE (M/M)

| RATINGS OF NOMINAL DIMENSION | OVER 0.5 TO 6 | OVER 6 TO 30 | OVER 30 TO 120 | OVER 120 TO 400 | OVER 400 TO 1000 | OVER 1000 TO 2000 | OVER 2000 TO 4000 | OVER 4000 TO 8000 | OVER 8000 TO 16000 |
|------------------------------|---------------|--------------|----------------|-----------------|------------------|-------------------|-------------------|-------------------|--------------------|
| TOLERANCE                    | +0.1          | +0.2         | +0.3           | +0.5            | +0.8             | +1.2              | +2.0              | +2.0              | +2.5               |

ACAD

THIS DRAWING IS THE PROPERTY OF JAPAN ENGINE CORPORATION. AND SHALL NOT BE REPRODUCED, NOT BE USED TO FURNISH ANY INFORMATION FOR MAKING DRAWINGS OR APPARATUS EXCEPT FOR THE CASE WHERE JAPAN ENGINE CORPORATION AGREES WITH WRITTEN MATERIALS.