

A

B

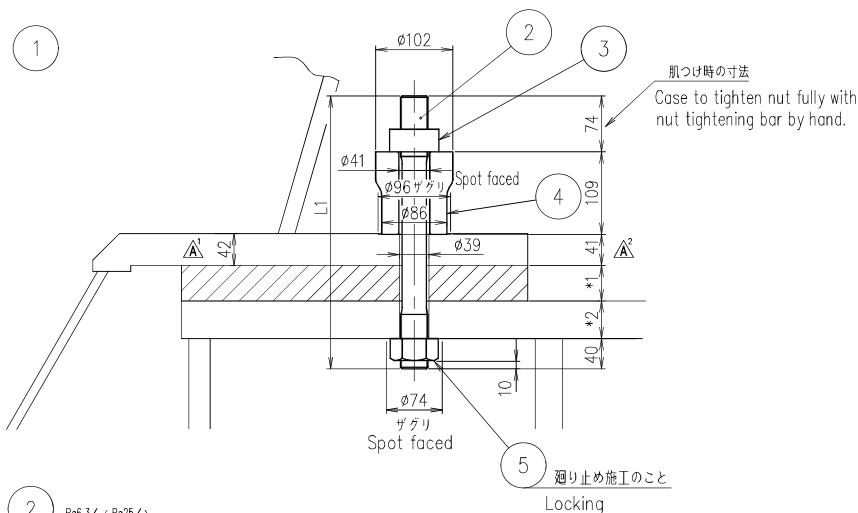
C

D

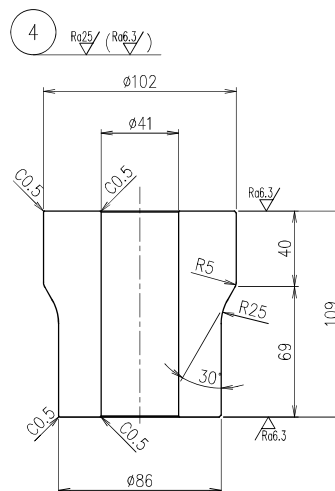
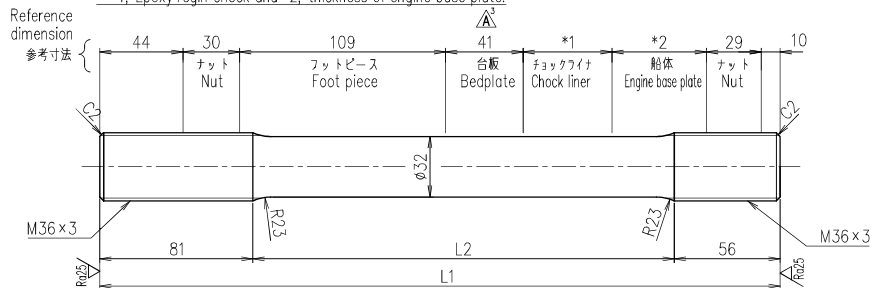
E

A2

SURFACE FINISHES	RAINGS	UNDER	UNDER	UNDER	UNDER	SPOT-MA CHED SURFACE	PREVIOUS DRAWING
	(a)	0.8	6.3	25	TOO	~	U1-1B306
REVISIONS							
NO.	UC NO.	DESCRIPTION	DATE	ZONE	APP- PROVED	CHECK- ED	DRAWN
3	UC13703	一部寸法変更した。	2022-02-18	AB-1 B-2	木下	吉川	二宮

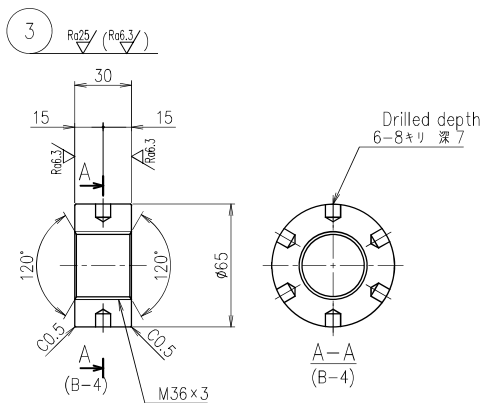


L1, L2寸法はレジinchock: \*1 及び機関取付板の厚み: \*2により決定のこと。  
Dimension L1 and L2 are to be decided in accordance with \*1; Epoxy resin chock and \*2; thickness of engine base plate.

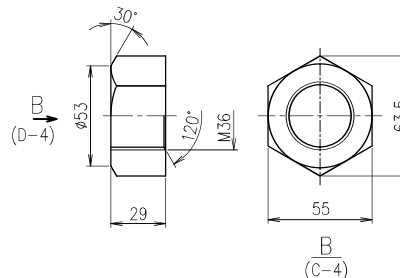


備考  
1. 特記以外の各面はすべて糸面取りのこと。  
Remark  
1. Sharp edges must be removed.

参考図



5 Reference JIS B 1181  
JIS B 1181 六角ナットに準拠のこと  
仕上げ区分 中  
Finished Ra0.3



COMMON VARI- ATION OF TOLERANCE (MACHINING) (M.M)	RATINGS OF NOMINAL DIMENSION		OVER	OVER	OVER	OVER	OVER	OVER	OVER	OVER
	0.5 TO 6	6 TO 30	30 TO 120	120 TO 400	400 TO 1000	1000 TO 2000	2000 TO 4000	4000 TO 8000	8000 TO 16000	16000 TO 32000
TOLERANCE	+0.1	+0.2	+0.3	+0.5	+0.8	+1.2	+2.0	+2.0	+2.5	+3.0

THIS DRAWING IS THE PROPERTY OF JAPAN ENGINE CORPORATION.  
AND SHALL NOT BE REPRODUCED, NOT BE USED TO FURNISH ANY INFORMATION  
FOR MAKING DRAWINGS OR APPARATUS EXCEPT FOR THE CASE WHERE  
JAPAN ENGINE CORPORATION AGREES WITH WRITTEN MATERIALS.

ACAD

PART NO.	MARK	DESCRIPTION	MATERIALS	TEST P.	1-PIECE	TOTAL	QUANTITY PER SET
5		Hexagon nut 六角ナット	S45CN		0.4	1	JIS B 1181
4		Foot piece フットピース	FC250		5.9	1	
3		Round nut 台板据付ナット	S45CN		0.5	1	
2		Holding down bolt 台板据付ボルト	SCM435Q or SCM440Q		-	1	
1		Details of holding down bolt and nut 台板据付用部品図			-	1set	

JAPAN ENGINE CORPORATION		APPROVED		APPROVED		UEC50LSH-Eco	
江原		江川		吉川		台板据付用部品図	
CHECKED		CHECKED		DRAWN		1/1	
DRAWN		DATE		DRAWING NO.		REVNO.	
浅田		2014-01-21		U1-1K081		A	
1st ANGLE PROJECTION		SCALE		1/5,1/2,1/1		控	
Weld shall comply with JIS (Japan Industrial Standards) .		Material shall comply with JS unless otherwise specified.		JAPAN ENGINE CORPORATION		生計	