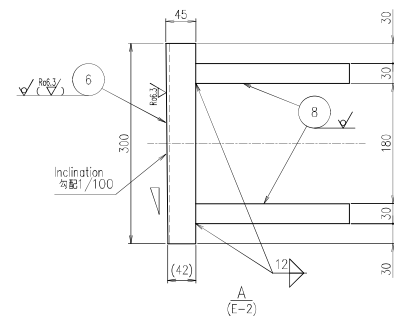
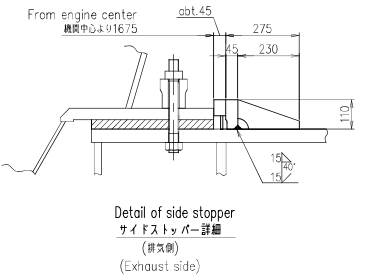
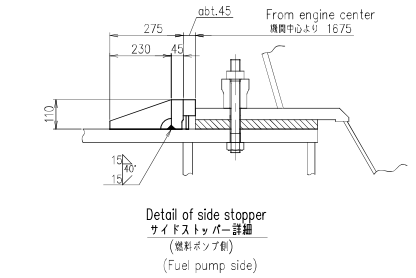
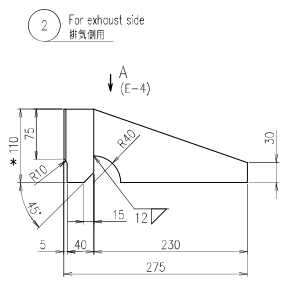
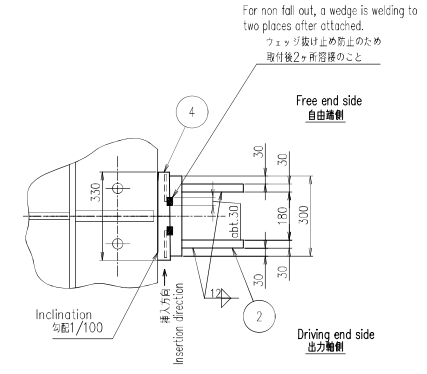
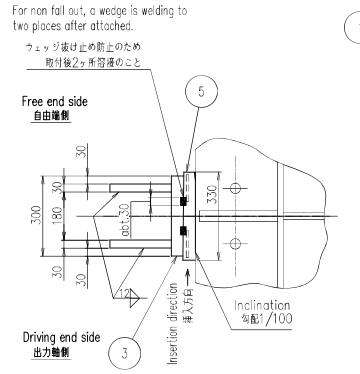


SPRINKLING	REVISIONS	PREVIOUS DRAWING	U1-1B.305
MARKING	NO.	UC NO.	DESCRIPTION
REVISIONS	DATE	ZONE	APP. CHECK DRAWN
A	UC9084	レジンジョック厚み(燃料側)を改訂した。	2014-01-29 G-3-4 江戸 吉川 渡田
B	UC14278	燃料110K改訂正	2023-02-21 全館 木下 鹿野 浅田



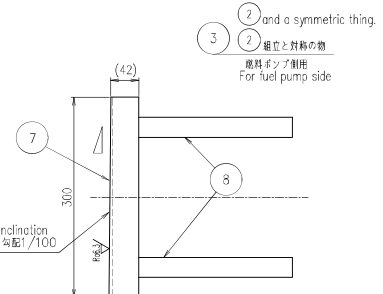
Detail of side stopper サイドストッパー詳細 (燃料ポンプ側) (Fuel pump side)

Detail of side stopper サイドストッパー詳細 (排気側) (Exhaust side)

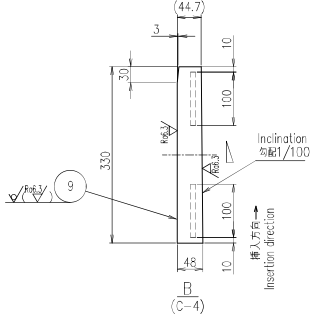
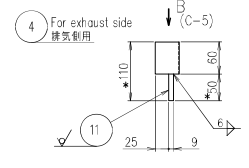
View from driving end

Remarks
 1. Painting: To be coated primer paint, include finish surface.
 2. *mark dimensions shall be adjust it for thickness of resin check.
 This drawing shows that the chock thickness is cose of 35 mm.
 3. Refer to other drawing "Arrangement of holding down bolt" for arrangement of side stopper.

備考
 1.塗装: 仕上面を除いた部分はプライマ塗料のこ。塗料の厚みを調整すること。
 2. 図中*寸法はレジンジョックの厚みにより調整のこと。
 本図はレジンジョック厚み35mmの場合を示す。
 3. サイドストッパーの配置は別途台板取付要領図を参照のこと。

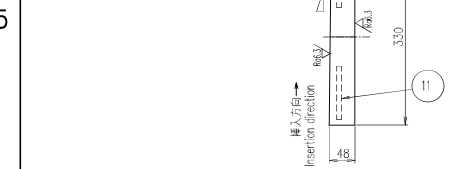


5 and a symmetric thing.
 5 組立と対称の物
 燃料ポンプ側用
 For fuel pump side



2 and a symmetric thing.
 2 組立と対称の物
 燃料ポンプ側用
 For fuel pump side

PART NO.	MARK	DESCRIPTION	MATERIALS	QTY	NET WEIGHT (g)	TOTAL WEIGHT (g)	QUANTITY PER SET
11		Plate 板 t19	SS400	0.35	1.4	4	
10		Plate 板 t50	SS400	12.5	1	1	
9		Plate 板 t50	SS400	12.5	1	1	
8		Plate 板 t30	SS400	3.7	14.8	4	
7		Plate 板 t50	SS400	11.4	1	1	
6		Plate 板 t50	SS400	11.4	1	1	
5		Wedge(Cam side) フェッジ(カム側用)		13.2	1set	1set	Make up Form (C-4) (C-5)
4		Wedge(Exh.side) フェッジ(排気側)		13.2	1set	1set	Make up Form (C-4) (C-5)
3		Side stopper(Cam side) サイドストッパー(カム側用)		18.8	1set	1set	Make up Form (C-4) (C-5)
2		Side stopper(Exh.side) サイドストッパー(排気側)		18.8	1set	1set	Make up Form (C-4) (C-5)
1		Side stopper assembly 台板サイドストッパー組立		64	1set	1set	



TOLERANCE (mm)	OVER 0.5 TO 3	OVER 3 TO 10	OVER 10 TO 30	OVER 30 TO 100	OVER 100 TO 300	OVER 300 TO 1000	OVER 1000 TO 3000	OVER 3000 TO 10000	OVER 10000 TO 30000	OVER 30000 TO 100000	OVER 100000 TO 300000
ACAD	+0.1	+0.2	+0.3	+0.5	+0.8	+1.2	+2.0	+3.0	+5.0	+8.0	+12.0

THIS DRAWING IS THE PROPERTY OF JAPAN ENGINE CORPORATION AND SHALL NOT BE REPRODUCED, NOT BE USED TO FURNISH ANY INFORMATION FOR ANY DRAWINGS OR APPARATUS EXCEPT FOR THE CASE WHERE JAPAN ENGINE CORPORATION AGREES WITH WRITING MATERIALS.

JAPAN ENGINE CORPORATION	APPROVED	APPROVED	DATE	2014-01-21	DRAWING NO.	REV. NO.
	製図				U1-1K082B	
CHECKED	江戸	CHECKED				
DRAWN	吉川	DRAWN				

1st ANGLE PROJECTION SCALE 1/101,5,1/4 DRAWING NO. U1-1K082B REV. NO. B
 Held that comply with JIS (Japan Industrial Standards). Material shall comply with JIS unless otherwise specified. JAPAN ENGINE CORPORATION