

A

B

C

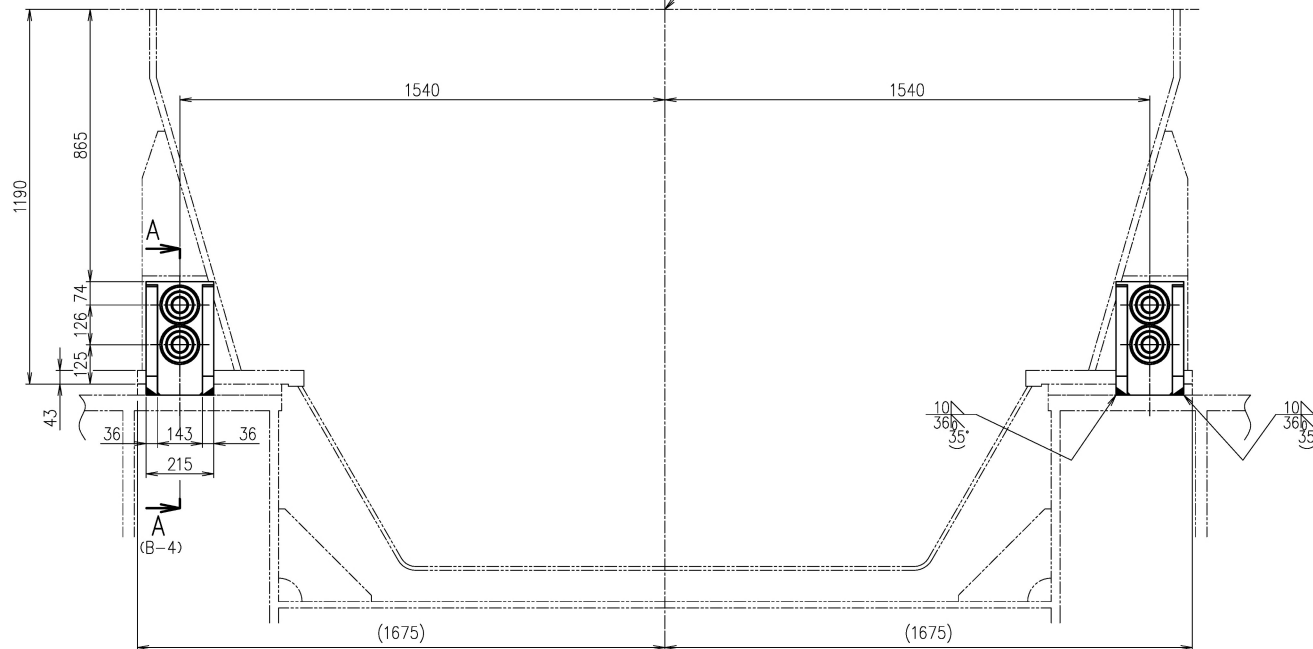
D

E

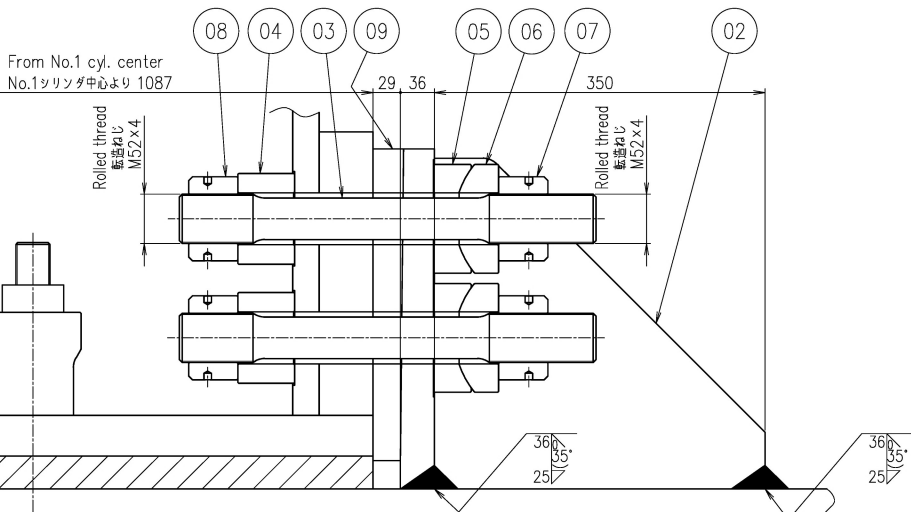
A2

01

Crankshaft center
クランク軸中心



View from driving end side
出力軸端側より見る



A-A
(A-2)

SURFACE FINISHES	RATINGS				PREVIOUS DRAWING
	(1)	(2)	(3)	(4)	
▽▽▽	0.4	0.8	1.6	3.2	U1-1B060
▽▽	0.4	0.8	1.6	3.2	
▽	0.4	0.8	1.6	3.2	
▽	0.4	0.8	1.6	3.2	
▽	0.4	0.8	1.6	3.2	

REVISIONS						
NO.	UC NO.	DESCRIPTION	DATE	ZONE	APP- PROVED	CHECK- ED
△		部品図図面番号変更した。 安田,浅田,田中,飯垣	2013-07-01	D-3	江戸	吉川
△	UC11525	図面枠を差し替えた。 50LSJを追記した。	2018-06-26		青田	木下 吉川

PART NO.	MARK	DESCRIPTION	MATERIALS	QTY	1-PIECE WEIGHT (kg)	TOTAL QUANTITY PER SET
U1-1K009-01	09	Thrust chock スラストチョーク	SS400	15.7	31.4	2
U1-1K011-06	08	Round nut 丸ナット M52x4	S45CQ	1.8	7.2	4
U1-1K011-05	07	Round nut 丸ナット M52x4	S45CQ	1.7	6.8	4
U1-1K011-04	06	Spherical washer 球面座金	S45CQ	2.1	8.4	4
U1-1K011-03	05	Spherical washer 球面座金	S45CQ	2.2	8.8	4
U1-1K011-02	04	Washer 座金 φ92x60L	S45CQ	2.3	9.2	4
U1-1K011-01	03	Tension bolt テンションボルト M52x4	SCM435Q	6.2	24.8	4 or SCM440Q
U1-1K008-01	02	Bracket スラスト受け台ブACKET		62.3	124.6	2
	01	Thrust stopper assembly スラスト受け用ストッパー組立				221.2 1

APPROVED	DATE DRAWN	2013-06-25	DRAWING NO.	REVNO.
開発部 承認 移原			U1-1K007	B
江戸				
吉川				
CHECKED				
DRAWN				

3rd ANGLE PROJECTION		SCALE	1/12, 1/4	REVNO.	B
Weld shall comply with JIS (Japan Industrial Standards).		Material shall comply with JIS unless otherwise specified.		JAPAN ENGINE CORPORATION	

COMMON VARI- ATION OF TOLERANCE (MACHINING) (M.M)	RATINGS OF NOMINAL DIMENSION									
	0.5 TO 6	6 TO 30	30 TO 120	120 TO 400	400 TO 1000	1000 TO 2000	2000 TO 4000	4000 TO 8000	8000 TO 16000	OVER 16000
TOLERANCE	+ 0.1	+ 0.2	+ 0.3	+ 0.5	+ 0.8	+ 1.2	+ 2.0	+ 2.0	+ 2.5	

ACAD

THIS DRAWING IS THE PROPERTY OF JAPAN ENGINE CORPORATION.
AND SHALL NOT BE REPRODUCED, NOT BE USED TO FURNISH ANY INFORMATION
FOR MAKING DRAWINGS OR APPARATUS EXCEPT FOR THE CASE WHERE
JAPAN ENGINE CORPORATION AGREES WITH WRITTEN MATERIALS.